



Paya Lebar
Methodist Girls' School (Secondary)
巴耶礼峇美以美女校 (中学)

2023 Singapore-Cambridge GCE O-Level Examinations

Release of Examination Results

*Welcome Back
PL Lites!*

11 JAN 2024 ♥





2023 Singapore-Cambridge GCE O-Level Examinations

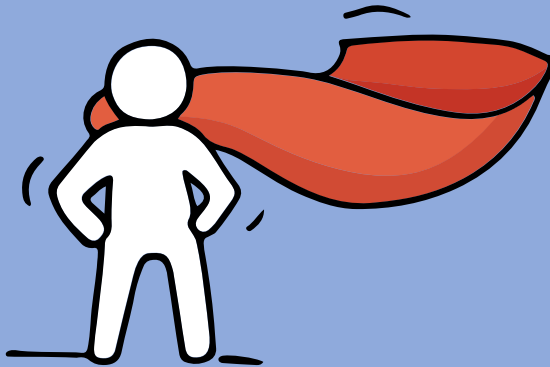
Programme

Welcome	Ms Amy Ng (Principal)
Briefing of the Joint Admission Exercise (JAE) 2023	Mrs Low (HOD CCE)
Release of the 2023 GCE O-Level Results	Ms Amy Ng (Principal)
Release of Result Slips & other Documents	Form Teachers



Think about your opportunities

*Are we all going to
be okay?*



Remember that **everyone's learning journey is different**
but **we can each have a fulfilling outcome!**



No matter the circumstances, there is always a way forward.

Stop

- Calm yourself down. Take a few deep breaths.

Think

- Think through the different options that are available for you. Keep things in perspective.
- Remember that the O-Level is one part of your life journey and not the destination.

Do

- Approach a trusted adult and seek his/her help. Have a conversation with this person about what would be best for you.
- Make a decision and take action based on your options.

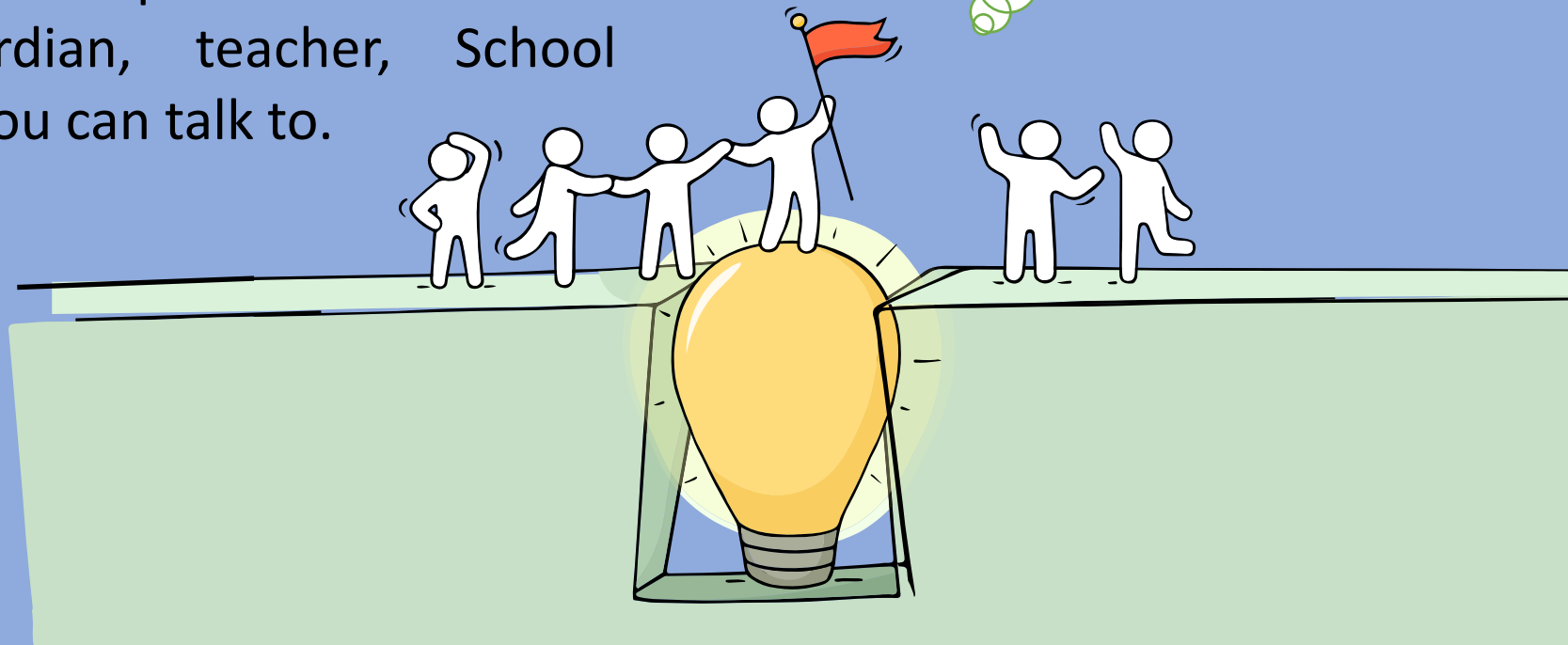
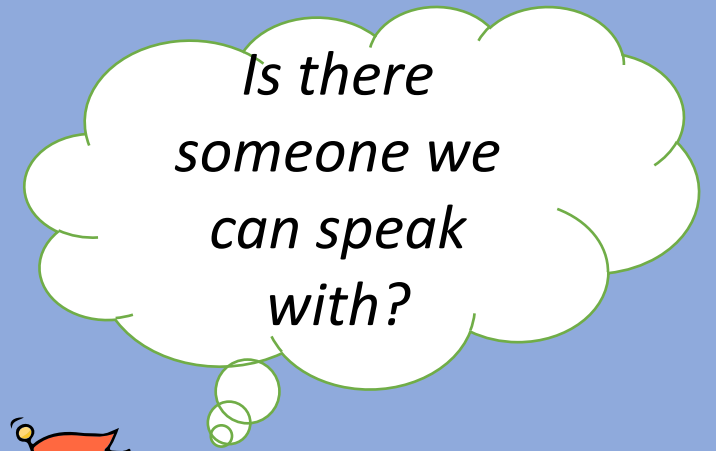
When you receive your results, you may experience a range of emotions.

Managing these emotions well will allow you to stay calm and make rational decisions.



Reaching out for help is a sign of strength, not weakness.

If you have any concerns or are not coping, do reach out to someone you trust and speak with them. It could be a parent/guardian, teacher, School Counsellor or a friend that you can talk to.

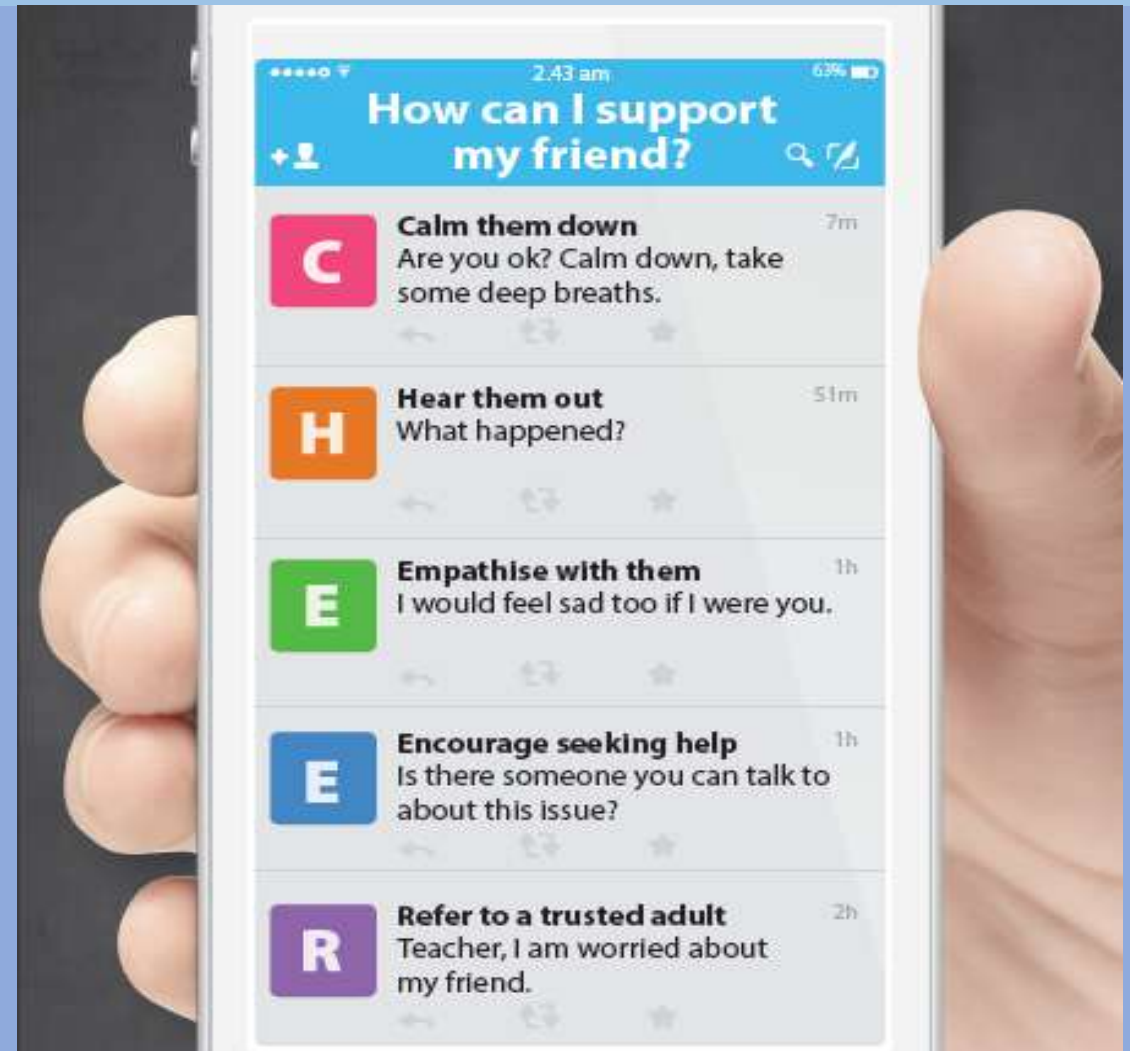


Supporting Your Friend

We may each experience different emotions upon receiving the results. You can share your friends' joy by congratulating them or give words of encouragement to friends who may be disappointed with their results.



Keep a lookout for your friends in distress. You can support them in the following ways:



Support is readily available for you.

There are other hotlines and chats available if you are more comfortable seeking help using these platforms. Scan the QR code below for a helpful resource.



SOS provides round-the-clock emotional support for those in distress, thinking of suicide or affected by suicide.

Call: **1767**
(24-hour helpline)

Whatsapp: **9151 1767**
(24-hour Care Text)

TOUCHline is a helpline to provide youths with emotional support and practical advice.

Call: **1800-377 2252**

*Monday- Friday (Excluding Public Holidays):
9am – 6pm*

Community Health Assessment Team

(CHAT) provides personalised and confidential mental health checks and consultation for youths. To speak with a youth support worker, you can:

Visit: **CHAT Hub at *SCAPE, #05-05**

Call: **6493 6500/ 6501**

Email: **CHAT@mentalhealth.sg**

Carey is an online platform by Care Corner that provides free mental health check-ins with mental health professionals. Find out more at:
<https://carey.carecorner.org.sg/>

mindline.sg is an online platform that provides tools, tips and resources to help you manage your health and well-being. Find out more at:

www.mindline.sg



eC2 is an e-Counselling Centre where you can talk to a trained counsellor about the issues you are facing, right where you are.

Chat with a counsellor at:

www.ec2.sg

*Monday – Friday (Excluding Public Holidays):
10am – 12pm & 2pm – 5pm*

Thinking About Your Next Step?

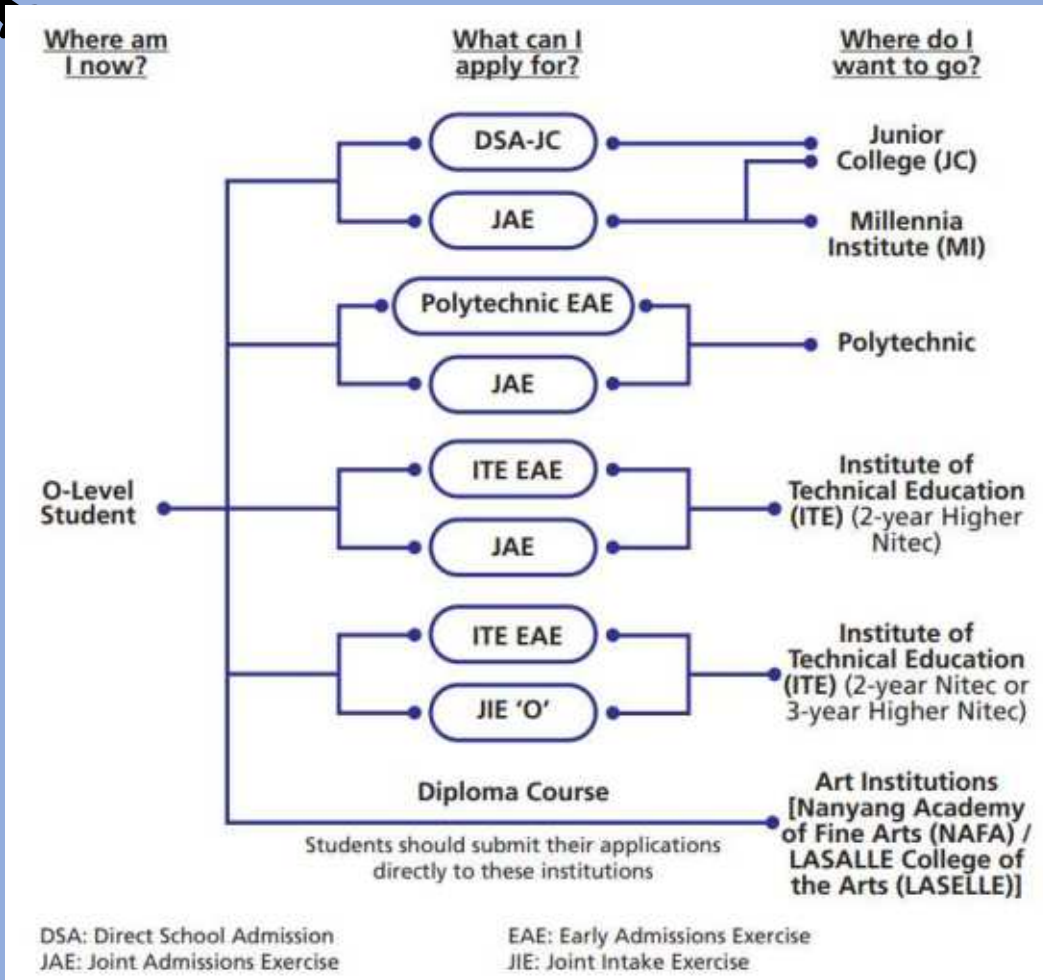


— Who am I?

— Where do I want to go?

— How do I get there?

What are my options after the GCE O-Level exams?



Learn more about the admissions exercises and programmes

<https://moe.gov.sg/post-secondary/admissions>



Learn more about the post-secondary education institutions

<https://moe.gov.sg/post-secondary/overview>



OPEN HOUSE

2024



WHEN?

Different Dates in Jan

WHERE?

Information can be
found on the school
website



Visit the school website and look under “Announcements” for detailed information on the JC & Poly Open Houses for 2024!

2024 JCs and Polytechnics Open House

[Information on the release of O Level results 2023](#)

[2024 Semester 1 Timetable](#)

[First Week of School Programme](#)

[Principal's Letter to Parents](#)

[2024 JCs and Polytechnics Open House](#)

Dear parents and students,

The post-secondary education institutions will be having their open houses over the next few weeks to support students in their exploration of post-secondary education pathways. The Polytechnics' Open Houses start today and some have also organised seminars for parents and students.

The ECG team has collated the available information on the Open Houses in this google document: [2024 JCs and Polys Open House dates updated 3Jan.pptx - Google Slides](#) ↗, for your reference please.

Resources to help you make informed decisions



MySkillsFuture Student Portal

A one-stop portal that empowers you to embark on a journey of self-discovery and make informed education and career choices.

Use the information and tools to explore various education and career pathways and take charge of your future.

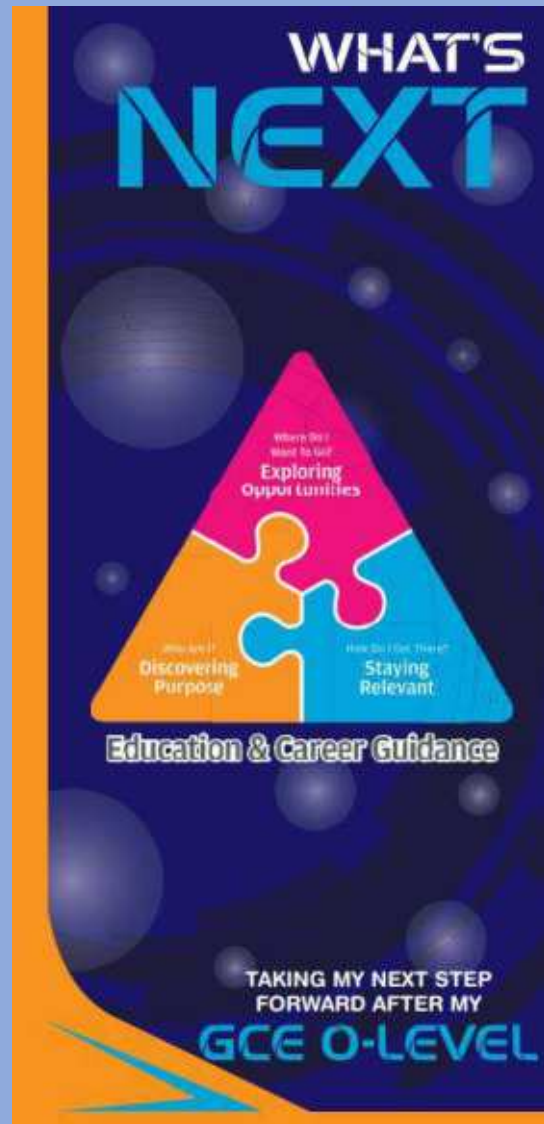
Where can we find more information?



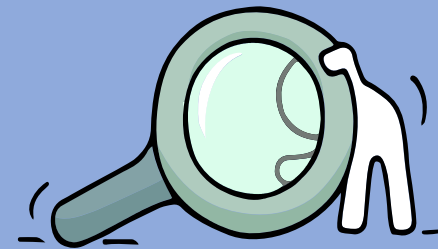
<https://go.gov.sg/mySFsec>



Resources to help you make informed decisions



Where can we find more information?



<https://go.gov.sg/whats-next-olevel>



Help is readily available for you.

Reach out to an ECG Counsellor!

Make an appointment to speak with your ECG Counsellor in school.

BOOK AN APPOINTMENT WITH OUR ECG COUNSELLOR



Tuesday and Thursday

8.30am – 5pm

Email: chong_soo_hui_priscilla@moe.edu.sg

Booking form: <https://go.gov.sg/plmgss-ecg>



Make an online or phone counselling appointment with the ECG Centre @ MOE (Grange Road) through <https://go.gov.sg/moe-ecg-centre>



Is there someone we can speak with?



Drop by the ECG Booth at the back of the hall to take some brochures and to find out more information on the various Open Houses!



The O-Level is not the destination.

It is part of your education journey.



Joint Admissions Exercise

JAE 2024

Junior Colleges (JC)/ Millennia Institute (MI)

Polytechnics (Poly)

Institute of Technical Education (ITE)

Applications should be submitted online through the JAE-Internet system (JAE-IC)

<https://www.moe.gov.sg/post-secondary/admissions/jae>



JAE 2024

The JAE registration will commence on the **same day** as the release of the 2023 GCE 'O' Level Examination results.

The **registration period** is from:

4.00pm on 11 Jan (Thurs)

to **4.00pm on 16 Jan (Tues)**



JAE 2024

Registration for courses under the JAE should be submitted through the JAE-Internet System (**JAE-IS**) using
–**SingPass**



JAE 2024

All students will receive **Form A** via email.

If not, please log in to the JAE Internet System (JAE-IS) using Singpass to download the Form A.

If you still encounter issue, please inform the school.

*All students successfully admitted to a school through the Direct School Admission-JC (DSA-JC) / Early Admission Exercise (Poly-EAE) will **not** be eligible to participate in JAE.*



Ministry of Education
SINGAPORE

2024 Joint Admissions Exercise

Form A

Name Address School Code : 7026		019025-7026 Centre Index No. : 2324410001
---------------------------------------	--	--

Please apply your course choices by 16 Jan 2024, 04:00 PM.

Your 2023 GCE O-Level Examination results:

Your aggregate scores:

JC	MI	Polytechnic				ITE		
L1R5	L1R4	ELR2B2-A	ELR2B2-B	ELR2B2-C	ELR2B2-D	ELB4-A	ELR1B3-B	ELR2B2-C

Your eligible courses:

- You meet the entry requirements for the below courses and are eligible to apply. However, a place in the course is not guaranteed as admission is based on merit, your choices and available vacancies.
- Course codes and descriptions can be found in www.moe.gov.sg/jaecourses.

JC/MI:

You are eligible for all JC/MI courses.

Polytechnic/ITE:

C27 C28 C29 C30 C31 C32 C34 C35 C36 C38 C41 C42 C43 C45 C46 C47 C49 C50 C51
 C52 C54 C62 C65 C67 C69 C70 C71 C72 C73 C75 C80 C81 C85 C87 C89 C93 C94 C96
 C97 C98 N11 N12 N13 N14 N15 N40 N41 N42 N43 N44 N45 N48 N50 N51 N53 N54 N55



JAE 2024

You should complete the **JAE Worksheet** before submitting the online application

You are advised to make full use of the **12 choices and choose wisely.**

(Refer to **JAE Website** for important points to note. You can also use the SchoolFinder and CourseFinder shared in the 2024 JAE information sheet to search for courses offered under 2024 JAE.)



JAE worksheet



JAE website





JAE 2024 - THINK ABOUT

- What are the different types of courses and institution I can apply for?
- How can I make the best use of my **12 choices**?

Passion, Practical and Prudent

- Make the **best** use of your 12 choices where your first 3 choices should be courses that you are
 1. Very passionate about.
 2. Close to the cut off point.



JAE 2024 BONUS POINTS

1. You can get a maximum of 4 bonus points from a combination of any of these types:

Type of bonus points	No. of bonus points
CCA grade <ul style="list-style-type: none">• Excellent• A1 or A2	2
CCA grade <ul style="list-style-type: none">• Good• B3 to C6	1
English and Higher Mother Tongue Language grade <ul style="list-style-type: none">• A1 to C6	2
Chinese or Malay (Special Programmes) or Bahasa Indonesia grade <ul style="list-style-type: none">• A1 to C6	2
Affiliated JC <ul style="list-style-type: none">• Selected as your 1st choice• Selected as your 1st and 2nd choice	2

2. You get an additional 2 bonus points if you are selected for Chinese, Malay or Tamil Language Elective Programme

- [Chinese Language Elective Programme](#)
- [Malay Language Elective Programme](#)
- [Tamil Language Elective Programme](#)



JAE 2024

JAE Posting is released through:

- JAE-IS, which you can access using your Singpass.
- SMS (HP), if you have provided a local mobile number in your application.

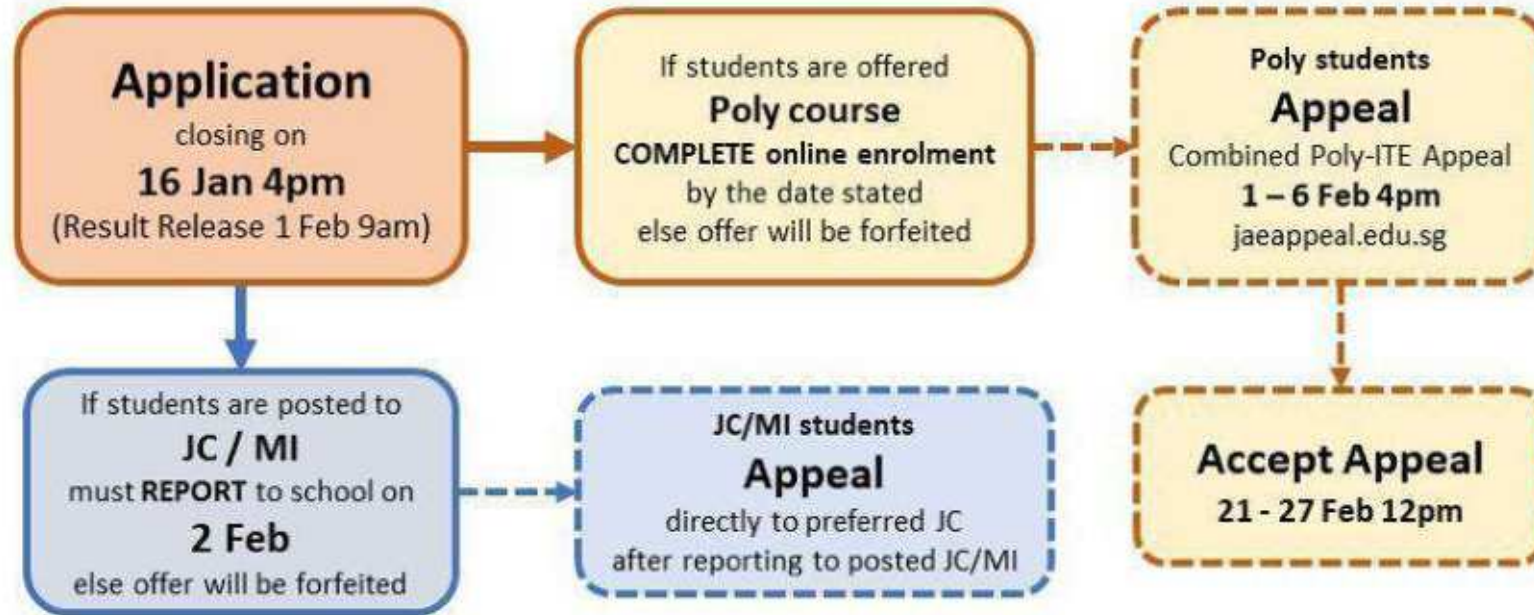
Students who are offered a course in a **JC/MI** must report to the JC/MI on the morning of the day after posting results are released, that is on Friday, 2 February 2024.

Students who are offered a course in a **Poly/ITE** should expect to receive enrolment instruction and are required to complete **online enrolment** by the date stipulated to confirm your acceptance for the course of study.

Students who fail to report to the JC/MI/Poly/ITE on the stipulated dates are deemed to have forfeited her place.



JAE (JC & Poly) Timeline 2024



- Students posted to JC/MI must report to school on **2 Feb 2024** (and thereafter appeal directly to the preferred JC, if needed).
- Poly & ITE students will be informed by their respective institutions on their enrolment and date to report to school.
- All the above dates are tentative. Please refer to the respective websites for updates.
- JAE Admission Exercise <https://www.moe.gov.sg/post-secondary/admissions/jae>



JOINT POLY/ITE ONLINE APPEAL PORTAL

If you want to submit an appeal:

- **For junior colleges (JC) and Millennia Institute (MI)**, visit the school website to find out about the appeal process and timeline. Use [SchoolFinder](#) to find the school's contact details.
- **For polytechnics and Institute of Technical Education (ITE)**, you can check the appeal submission timeline and submit your appeal through the [JAE Online Appeal Portal](#). On the appeal portal, under "**Courses**", you can find the latest net aggregate scores to guide you in choosing the courses to appeal for.



Poly Foundation Programme

Current 5N students and Newly Eligible

4(NA) students to note

Eligible students who have obtained a raw ELMAB3 of 12 points of better and meet the subject-specific requirements for their chosen course can apply for PFP

Eligible students will receive Form P which contains a unique pin which they can submit online via the PFP portal
https://pfp.polytechnic.edu.sg/PFP/pfp_application.html



PFP

**Current 5N students and Newly Eligible
4(NA) students to note**

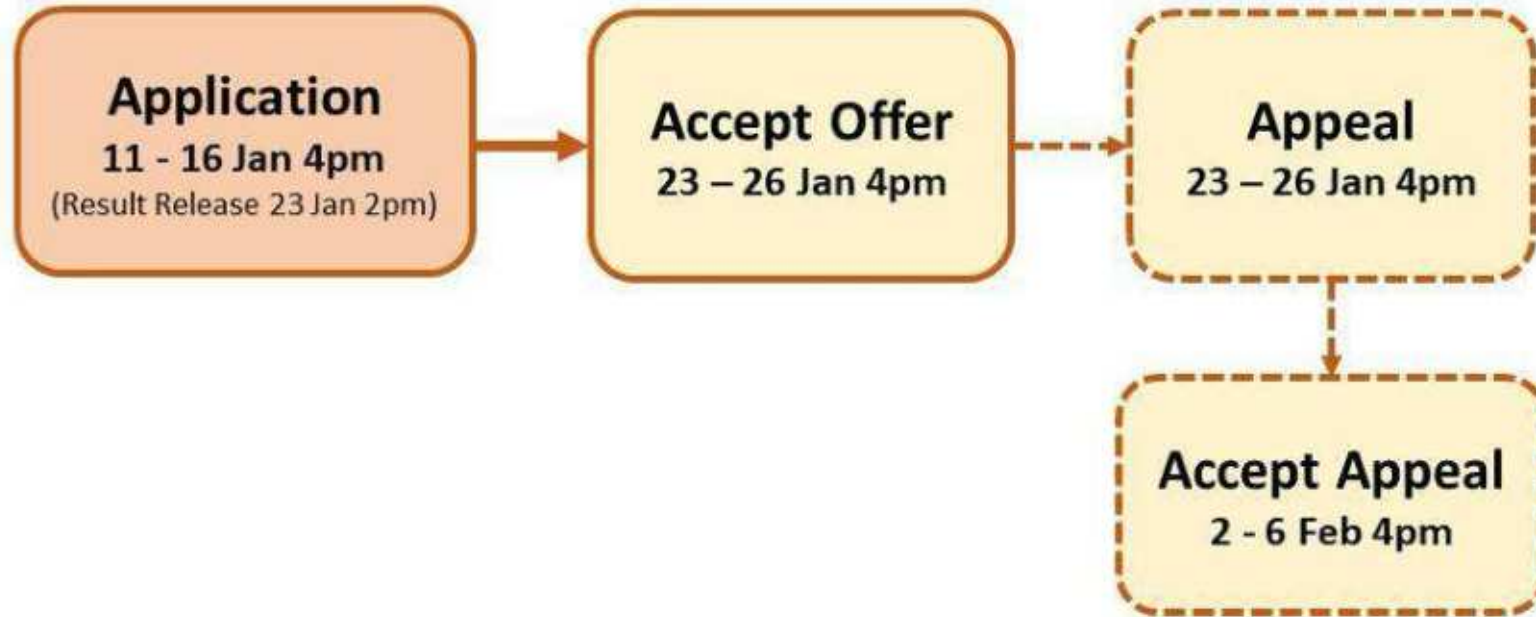
Application **11 Jan Thurs (2pm) to 16 Jan Tues (4pm)**

Posting results **23 Jan Tues (2pm)**

Students are to indicate their wish to accept,
reject, or appeal for a course change
by 26 Jan Fri (4pm)



PFP Timeline 2024



- The last day of school for Secondary 5 students who have accepted a place in the PFP will be on 26 Jan 2024.
- Students will be informed by the respective polytechnics on the enrolment dates for the PFP.
- All the above dates are tentative. Please refer to PFP website for the actual dates.
- PFP Admission Exercise <https://pfp.polytechnic.edu.sg/PFP/index.html>

Russell 10 Jan 2024



DPP

**Current 5N students and Newly Eligible
4(NA) students to note**

Eligible Secondary 4 N(A) students may go to <https://www.ite.edu.sg/> and click on the 'Apply for ITE Courses' icon. Click on 'Direct Entry Scheme to Polytechnic Programme (DPP)' under 'Full-Time 2-Year Higher Nitec with 10 Weeks Preparatory Courses (Jan 2024 Intake)'.

Application **11 Jan Thurs (2pm) to 16 Jan Tues (11.59pm)**

Posting results **18 Jan Thurs (9am)**

Students are to indicate their wish to accept, reject, or appeal for a course change **by 22 Jan.**

In case of any discrepancy, the information on the DPP website shall prevail.



For successful PFP/DPP applicants

Students offered a place in DPP under the final application phase should report to ITE upon acceptance of the course offer.

Students will be informed by the respective polytechnics on the enrolment dates for PFP.



LEP Briefing Sessions



For students who offered HMTL

Open House briefing on pre-university Chinese/Malay/Tamil Language Elective Programme (CLEP/MLEP/TLEP)

All LEP students at the Pre-U level must offer H2 Chinese/ Malay/ Tamil Language & Literature at A-Level.

Outstanding students selected for the programme will be considered for the **Language Elective Scholarship.**



CLEP

LEP	Date	LEP School	Time of LEP Briefing and Venue	Name and Email Address of Teacher-in-charge
CLEP	13 Jan 2024 (Sat)	Dunman High School	11:45am – 12:30pm BSP Room (F2 Level 1 德馨阁)	Mdm Hong Lan hong.lan@dhs.edu.sg
	15 Jan 2024 (Mon)	Hwa Chong Institution (College)	3.00pm – 3.30pm LT3 (College)	Ms Yeo Tan Ching yeotc@hci.edu.sg
	12 Jan 2024 (Fri)	Jurong Pioneer Junior College	2.30pm – 3.30pm CLEP Room 1	Mrs Tan-Lim Soh Whee tan-lim_soh_whee@moe.edu.sg
	12 Jan 2024 (Fri)	Nanyang Junior College	11.00am – 12.00pm CLEP Room	Mdm Tan Choon Yan tan_choon_yan@moe.edu.sg
	12 Jan 2024 (Fri)	Temasek Junior College	11.30am – 12.10pm/ 1.00pm – 1.40pm CLEP Room	Ms Hao Deyi hao_deyi@moe.edu.sg



MLEP

MLEP	12 Jan 2024 (Fri)	Jurong Pioneer Junior College	2:30pm – 3.30pm MLEP Room, Level 4	Mdm Siti Atiqah Punari siti_atiqah_punari@moe.edu.sg
	12 Jan 2024 (Fri)	National Junior College	9.00am – 1.30pm MLEP Booth, TA12@Linden Block (known as TA classroom block)	Ms Iryianna Ahmad iryianna_ahmad@moe.edu.sg
	12 Jan 2024 (Fri)	Raffles Institution	10.00am – 2.30pm MLEP Room, Blk H, Level 1	Mr Ali Hanifah hanifah.a@ri.edu.sg
	12 Jan 2024 (Fri)	Tampines Meridian Junior College	10.30am – 3.30pm Informational Subject Booth	Mdm Faten Hana Bte Mustafa faten_hana_mustafa@schools.gov.sg
	12 Jan 2024 (Fri)	Yishun Innova Junior College	10.00am – 5.00pm MLEP Booth, Library	Mdm Najmah Bte Sidik najmah_sidik@schools.gov.sg



TLEP

TLEP	12 Jan 2024 (Fri)	Anderson Serangoon Junior College	9.00am – 1.30pm Room TA12	Mr Shahul Hameed shah_mohamed@schools.gov.sg
	12 Jan 2024 (Fri)	National Junior College	12.00pm – 2.00pm TLEP Room (Block C, Level 1, Room 1)	Dr Veeramuthu Ganesan veeramuthu_ganesan@schools.gov.sg Mdm Kamalavani Palaiyan kamalavani_palaiyan@schools.gov.sg



For Students Planning to Enter JCs/MI



Junior Colleges (JCs) & Millennia Institute

Prepares students for
the GCE 'A' Level Exams



Length of Study:

JCs – 2 years

MI – 3 years

Cut-off Points:

To enter a **JC**:

L1R5 must be ≤ 20

To enter **MI**:

L1R4 must be ≤ 20

Applicants must also meet
Subject requirements (see JAE
website/sch's website)





Direct School Admission – Junior Colleges

- Students who **had accepted offers** through 2023 **DSA Junior Colleges** will **not be eligible** to participate in the JAE.
- Students who **do not** meet the JC admission criteria **L1R5 \leq 20** may take part in the JAE to apply for courses which they are eligible for.



For Students Planning to Enter the Polytechnics



Polytechnics



Nanyang Polytechnic



Ngee Ann Polytechnic



Republic Polytechnic



Singapore Polytechnic



Temasek Polytechnic

Diploma courses provides students with hands-on experience and equips them with strong skills and competencies that will prepare them for the workforce.

Students **graduate with a Diploma in a specific area of study.**



Early Admissions Exercise (EAE)

- Students who have accepted their conditional offers and met the admissions criteria for the polytechnic course after the release of their final results will have their offers confirmed. (**Net ELR2B2 score of 26 points or better**)

Students must also satisfy the minimum entry requirements for the course they wish to pursue.

- Successful EAE students cannot take part in the JAE.



For Students Planning to Enter the Arts Institutions

NAFA and LASALLE





The Arts Institutions

Courses are **hands-on** with a focus in **visual and performing arts** (e.g. Design, Animation, Fine Arts, Media, Dance, Music).

Students **graduate with a diploma or degree.**





For Students Planning for Private Education



The 3Rs when deciding on Private Education

Reasons

- Why are you furthering your studies?
- Is this for better job prospects?

Readiness

- How ready are you to further your studies?
- Can you cope with the academic rigour and assignment deadlines?
- Can you fund your studies?

Risks

- Do you know the possible drawbacks?
- Your expected returns may not exceed the investments you put into your private education.
- Private schools may make exaggerated claims.
- Private schools may close due to various reasons.
- You may not get a full refund if you withdraw from your course.

<https://go.gov.sg/3rs>



8 Things You Should Know Before You Enrol in A Private School



School Registration

Ensure the school is registered with CPE. Review the school's registration period, expiry date and its overall registration track record.



Partner Institution

Research on the partner institution conferring the diploma or degree, and whether the qualification is recognised by the industry.

EduTrust Certification Scheme

Is the school EduTrust-certified*? Under the scheme, private schools are assessed for their performance in areas such as school management and provision of student support services.



**Schools are required to obtain EduTrust certification in order to offer external degree programmes*

School Premises

Head down to the campus ground to check the facilities and support services. Observe the study environment too.



Fee Protection



Ask if there is any course fee protection so that you will be able to recover unconsumed course fees should the school close down.

Beyond Course fees



Find out about the course syllabus and materials, graduation rates and employment prospects. Approach the alumni to find out what they think of the school.

Teachers

Check if the teachers are qualified to teach the course.



Internship

If industry attachment is included, find out which organisation you will be attached to, the period of attachment and the alternative arrangement should the attachment become unavailable. Verify the information with the organisation as well.





Financial Aid

Financial Aid is available to needy students studying Full Time at **JCs/MI, Polytechnics** and **ITE** (check websites for more info).



Availability of computers in school for JAE Registration

Venue: School Library

Attire: School Uniform

Dates: 11 Jan (4 pm – 5 pm)
12, 16 Jan (9 am – 4 pm)



Appeal for Review of Results

~\$114.45 per subject

(Candidates who do not have strong grounds for submitting an appeal are discouraged from doing so)

See Ms Lim Lin Lin & obtain the forms from the General Office



All The Best!

Just Shine!