A photograph of four female students in school uniforms standing on a green lawn in front of a school building. The students are wearing white short-sleeved shirts, dark blue vests, and red ties. They are all smiling and looking towards the camera. The background shows a school building with large windows and a colorful mural on the wall. The text '2026 Meet-the-Parents' is overlaid in large white letters with a black outline, and 'Secondary 3,4&5' is overlaid in smaller white letters with a black outline.

2026 Meet-the-Parents

Secondary 3,4&5

23 Jan 2026 (Friday)
6.30 p.m.

Official (Open) / Non-Sensitive



PAYA LEBAR METHODIST GIRLS' SCHOOL (SECONDARY)



(For Info)
**Please refer to the school website for names and
the contact details of our school teachers.**



PAYA LEBAR METHODIST GIRLS' SCHOOL (SECONDARY)



CONTENT

1. Our PLMGS Story

- Our 2026 Focus

2. Our Total Curriculum

3. The New Singapore Context – Full SBB

4. Our Parents



PAYA LEBAR METHODIST GIRLS' SCHOOL (SECONDARY)



Our PLMGS Story



PAYA LEBAR METHODIST GIRLS' SCHOOL (SECONDARY)

**Founded
1916**

**110 years
old in 2026!**

B12

THE STRAITS TIMES | MONDAY, APRIL 25, 2016 |

UNIVERSITY SEARCH AIM FOR COURSE THAT BEST SUITS YOU B9

EDUCATION

Carrying forward a compelling legacy



Paya Lebar Methodist Girls' School and Montfort Secondary School are marking a special anniversary this year. As they turn 100, The Straits Times looks at their past, present and future.

Amelia Teng

Paya Lebar Methodist Girls' School (PLMGS) is known for the dark-blue pinafores with white belts worn by its students.

But probably few know that it started as a school for boys.

It had 24 primary school boys and three teachers in 1917 when it first opened on a 93,000 sq ft piece of land in Boundary Road.

A year later, the school, known then as Paya Lebar English School and a branch of the Anglo-Chinese

School, began admitting girls. In 1961, it became a fully girls' school and took its current name. In 1986, it moved to its present-day site in Lorong Ah Soo, near Hougang.

Today, PLMGS has about 3,000 students and 250 teachers across primary and secondary levels. Prominent alumni include top civil servant Lim Siong Guan, Nominated MP Chia Yong Yong and former law minister E. W. Barker.

The school's longest-serving principal, Mrs Winnie Tan, was at the

[ALL IN THE FAMILY continued on B11](#)



The school at its Boundary Road campus back in the 1930s. It became a fully girls' school in 1961 and moved to its current location in Lorong Ah Soo in 1986. PHOTO: PAYA LEBAR METHODIST GIRLS' SCHOOL.

All along, PLMGS has upheld the importance of values such as honesty and selflessness in building a student's character, says its longest-serving principal, Mrs Minnie Tan (centre), who was at the helm from 1972 to 1997. Keen to carry on this tradition are (from right) Ms Sharon Lin, who teaches at PLMGS (primary), Mrs Quok Li Gek, the principal of PLMGS (secondary), alumni association president Quah-Lim Su-Lynn and her daughter Natalie, now in Sec 1 at the school. ST PHOTO: ONG WEE JIN



School History & Background

1916	Founding of Paya Lebar Methodist School at Boundary Road – School for Boys only, supported by the Methodist mission
1949	Became a Government-Aided School with 2 sessions – Girls in the morning & Boys in the afternoon
1961	Became a fully Girls' School (Full School)
1986	Relocation of school to present site – Lorong Ah Soo (Sec School)
2002	Attained Autonomous School status and SQC Award
2004(Dec)	Relocation to Serangoon North Ave 1
2006 90 th Anniversary	•Autonomous Status Reaffirmed (with 2 Best Practice Awards – T&L, Staff Well Being) and SQC Award
2007	<ul style="list-style-type: none"> • Relocation back to Lor Ah Soo • Official re-opening on 12 Oct 2007 • School Distinction Award
2009	Character Development Award
2012	•School Excellence Award & Reaffirmation of all Awards & SARD
2016 100 th Anniversary	•PLMGS celebrates 100 th anniversary
2026 110 th Anniversary	•PLMGS will be celebrating 110 th anniversary

28 Autonomous
Schools in Singapore.
Other examples:

- Anderson Sec
- Anglican High
- CHIJ (Toa Payoh)
- Nan Hua High
- Victoria Sch etc.



Criteria for Autonomous Schools

- School has a **good system in place** to achieve the Desired Outcomes of Education
- School has achieved consistently **good academic and other results**
- School is **well-established** and receives **parental support** and **public recognition**



Our School

- A distinctively Christian School with a rich Christian heritage and tradition
- **All girls' school with more than 100 years of history**
- Strong emphasis on character development and academic excellence
- **Arts / Music as our Niche**
- Strong partnership with Pri School and Church
- **An autonomous school**





PAYA LEBAR METHODIST GIRLS' SCHOOL (SECONDARY)



(For Info)
Slide on School Strategy Map has been removed

THE PLMGSS CULTURE

CARE

- Value **people** and **relationships**
- **Empower** people
- Practise **self-care**



EXCELLENCE

- Recognise **effort** and **growth** - not perfection
- Facilitate **intentional** and **effective feedback**
- Make **continuous improvement**
- Every experience is a **learning experience**



SCHOOL PRIDE

- **Everyone** can grow and contribute
- **Sense of belonging** to PL and its heritage
- To be a **beacon to the community**





PAYA LEBAR METHODIST GIRLS' SCHOOL (SECONDARY)



Vision

An outstanding school of choice producing women of fine character with a passion for life and learning

Mission

To nurture every PL-Lite into a whole person who lives in favour of God and man

H.E.A.R.T. Values

- Honour God
- Excellence (Mindset)
- Adaptability
- Respect
- Thankfulness





PAYA LEBAR METHODIST GIRLS' SCHOOL (SECONDARY)



Our 2026 Focus



PAYA LEBAR METHODIST GIRLS' SCHOOL (SECONDARY)



2026 Theme & Directions



No of Yrs	Yr	Yr Theme	Inspiration	Theme Verse	Theme Song
110 th year	2026	ONE Perfect 10 in Christ	<i>In an increasingly diverse society and world, we call for "more we" and "less me". To achieve this, we look to Jesus Christ as the unifying force and strength.</i>	Theme Verse 1 Just as a body, though one, has many parts, but all its many parts form one body, so it is with Christ. 1 Corinthians 12:12	We are One https://www.youtube.com/watch?v=82t0rQDzgsk



PAYA LEBAR METHODIST GIRLS' SCHOOL (SECONDARY)



2026

Theme: **ONE Perfect 10 in Christ**

Theme Verse:

Just as a body, though one, has many parts, but all its many parts form one body, so it is with Christ.

1 Cor 12:12



PAYA LEBAR METHODIST GIRLS' SCHOOL (SECONDARY)



2026 School Theme Song

Verse 4 of our Theme song "We Are One" aptly captures what we hope to achieve as a school.

[Verse 4]

Shaped by the hands of the potter
No two pieces alike
When we build a shelter together
We will shine, we will shine

[Chorus]

Let us draw near to each other
We are one, we are one
We are all sisters and brothers
Telling stories of our Father's love



PAYA LEBAR METHODIST GIRLS' SCHOOL (SECONDARY)



Our Total Curriculum



Purpose of Schooling

Research shows:

- Profession
- Performance
- Progression
- Person
- People
- Passion

About Ministry of Education, Singapore

The Education Service's Mission is to
mould the future of the nation.



MOE's vision:

"Thinking Schools, Learning Nation"





PAYA LEBAR METHODIST GIRLS' SCHOOL (SECONDARY)



(For Info)
Slide on Level Outcome & PL
Experience has been removed



PAYA LEBAR METHODIST GIRLS' SCHOOL (SECONDARY)



德 智 体 群 美

Morals, Intellect, Physical body, Team spirit, Aesthetics



Holistic Education

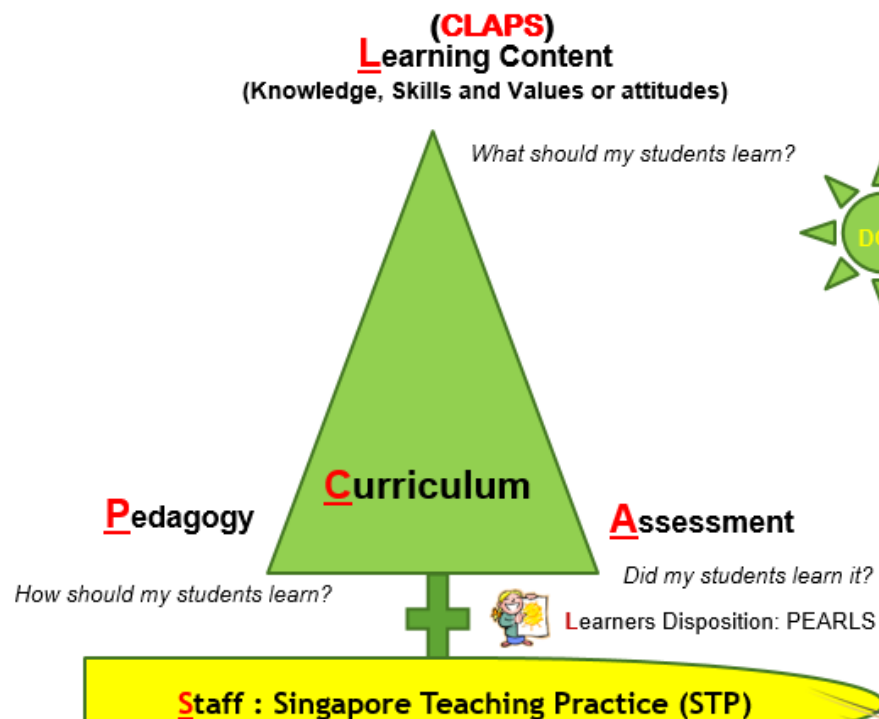
Official (Open) / Non-Sensitive



TOTAL CURRICULUM

TOTAL

Curriculum **L**earning content **A**ssessment **P**edagogy **S**taff



Total Curriculum								
Curriculum Programme (CP)						Co-curriculum Programme (CCP)		
Languages	Science		Mathematics			CCA	CCE	School-based programmes
Aesthetics	Humanities	PE	Design & Technology					

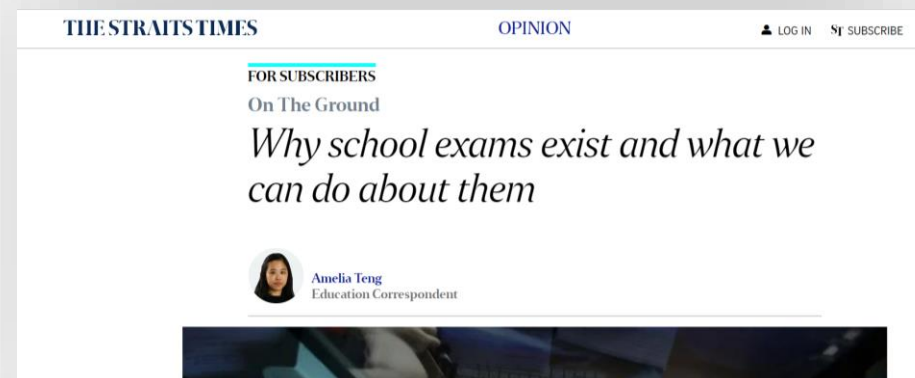
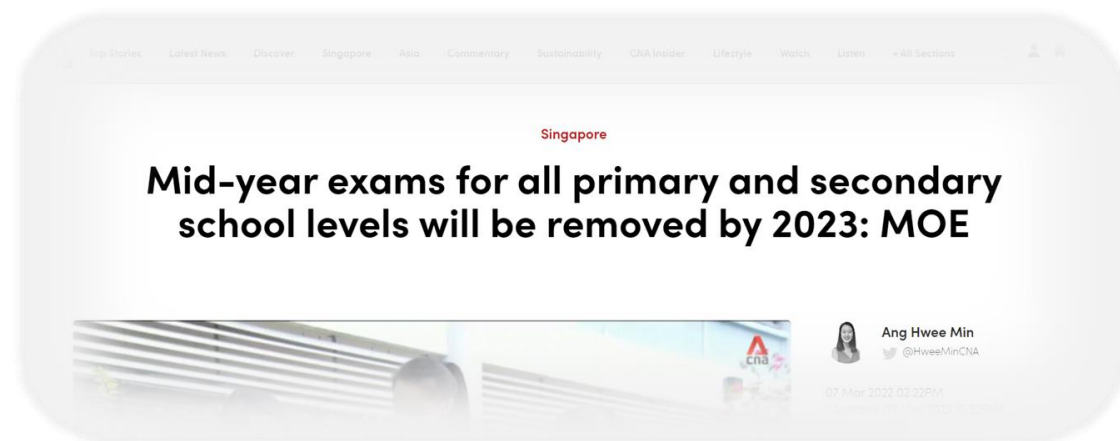


PAYAL LEBAR METHODIST GIRLS' SCHOOL (SECONDARY)



Instructional Programmes

1. Upper Secondary Expectations & Support
2. Assessment in 2026
3. Building Academic Foundation over 2 years





Upper Secondary Expectations

- Preparation starts **NOW**. Set realistic targets.
- It is a 2-year programme – for ALL Courses.
- At least **60%** of assessment content will be covered in Sec 3.
- Foundation is very important.





PAYA LEBAR METHODIST GIRLS' SCHOOL (SECONDARY)



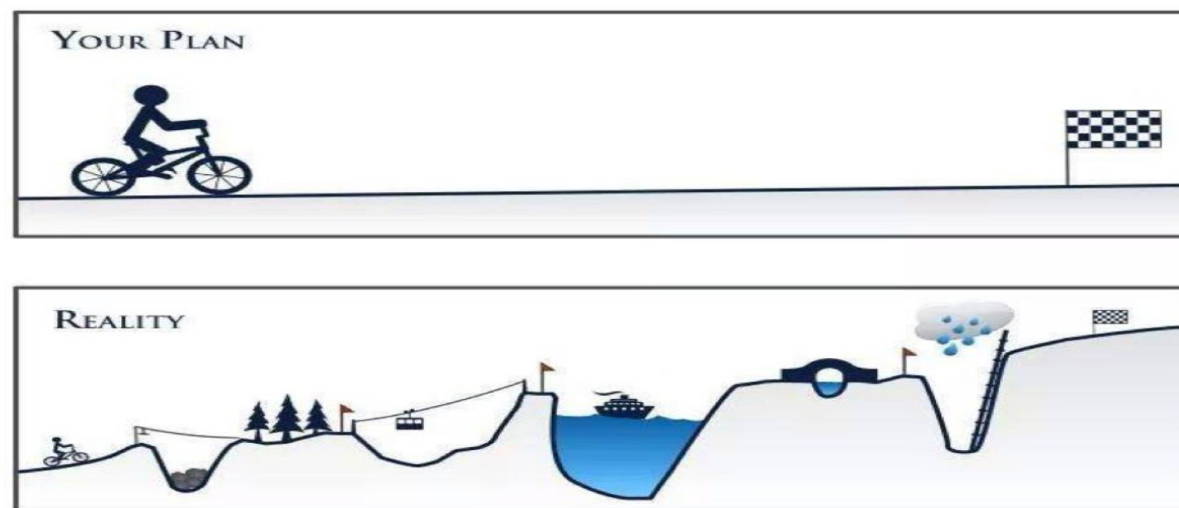
Upper Secondary Expectations

Goals vs Distractions

Results – Expectations vs Realities



Official (Open) \ Non-sensitive





How can PL-Lites get there?

- Take ownership of their learning
- Growth mindset
- Resilience
- Consistency



Upper Secondary Support

PERFECT 10 IN CHRIST
INTHIANS 12:12

Consultations

- Self-/Teacher-initiated
- S4 Jun/Sept holiday schedule

Remediation

- Identified students (Wed & Thurs)

Online resources

- SLS
- Google Classroom

Consultation

2.5 () LAU JING XUAN DESTINEE <lau_jing_xuan_destinee@plmgss.edu.sg>

to me, 2.5, 2.5

Dear Mr Tan,

Can we make an appointment for **consultation** to meet you tomorrow morning 7pm outside the staff room opposite the shaw hall.

Regards,
Group 7
Destinee, Nicole and Cornelia

Subject :	Name of Tr:		Venue:		
English Language	(Mon) Name (Class)	(Tue) Name (Class)	(Wed) Name (Class)	(Thurs) Name (Class)	(Fri) Name (Class)
0800 - 0830					
0830 - 0900					
0900 - 0930	4E5N EL Clinic @ 4E06		Theresa		nicole Soh jeryn yvette
					Nicole Soh jeryn Yvette

Time	Monday	Tuesday	Wednesday	Thursday	Friday
7:30 - 7:50	Flag Raising/Mass Assembly	PLS (7.30 – 8.30)	Flag Raising/Chapel	White Space (7.30-8.20)	Flag Raising/ LIVE Lessons
7:50 - 8:10	Core Curriculum		Flag Raising /PC time		Flag Raising /PC time
8:10 - 8:30		Core Curriculum	Core Curriculum	Core Curriculum	
8:30 - 8:50					
14:00 - 14:30		CCA	CCA	Sec 3 & 4 HMT (1430 - 1510)	Sec 1 & 2 HMT (1430 - 1510) Sec 3/4 O Level Music/Art (1430 - 1730)
14:30 - 14:50	Remediation (starts at 1430/1530) English/MT/Humanities			Remediation (starts at 1430) Maths and Science	
14:50 - 15:10					
15:10 - 15:30					
15:30 - 15:50					
15:50 - 16:10					
16:10 - 16:30					
1730					



Assessment Plan 2026

Modes of Assessment

- Both formative and summative assessments in the form of class assignments, tests and examinations are planned to enable each student to evaluate and chart progress of her learning in consultation with her teachers.

	Term 1	Term 2	Term 3	Term 4
Sec 1-3	10% - 1 WA through Alternative Assessment or test	15% - 1 WA through Alternative Assessment or test	15% - 1 WA through Alternative Assessment or test	60% - EOY Exam
Sec 4/5	1 WA through Alternative Assessment or test	1 WA through Alternative Assessment or test	Prelim Exam	GCE N/O Level Examinations



2026 Assessment - FAQs

When will students & parents receive the assessment feedback?

- Students will receive their assessment feedback once the grading is completed. Students will discuss and review the feedback and learning in class with their teachers. Students are encouraged to share their learning and performance with their parents/guardians. Parents/Guardians will receive your daughter/ward's Term 1 Result Slip at the start of Term 2.

What if I am unwell and absent for my assessments?

- For WAs – Should a student be absent on the day of WA, she will need to provide a **valid Medical Certificate***. She will receive the assessment papers for self timed-practice and **'MC'** status will be indicated for the paper. (*Noted that: An MC that is issued by a Chinese Physician and letter of excuse from parent are **INVALID**).
 - NO MAKE-UP TEST will be conducted
- For Exam – Should a student be absent on the day of exam paper, she will need to provide a **valid Medical Certificate**, a **'MC'** status will be indicated for the paper. A student who is absent from an examination without a MC will get an **'AB'** status (equivalent to zero mark attainment).



PAYA LEBAR METHODIST GIRLS' SCHOOL (SECONDARY)



(For Info)
Slides on school results have been removed



PAYA LEBAR METHODIST GIRLS' SCHOOL (SECONDARY)



LEAPS 2.0



LEAPS 2.0 points

LEAPS 2.0 is a framework to recognise secondary school students' holistic development. Students will be recognised with levels of attainment in four domains:

- **L**eadership,
- **A**chievement,
- **P**articipation and
- **S**ervice



PAYA LEBAR METHODIST GIRLS' SCHOOL (SECONDARY)



Demonstrating an Excellent Mindset in the Co-curriculum

Leadership

(Level 3) At least a...

- Class Monitor
- Peer Support Leader
- Peer Lite
- Prefect
- LS CCA chairperson / Vice-chairperson
- LS CCA Exco
- US CCA Comm
- LS House Captain/ Vice-Captain
- US House Comm
- UG Sergeant
- Chairperson / Vice chairperson for GLYW project
- Committee member for school-wide events
- NYAA (Silver)



Service

(Level 5) Completed at least 24 hours of service through...

- **Sec 1 & 2 Local FIS**
- **Sec 3 GLYW** (student-initiated VIA project)
- **Sec 4/5 CNY FIS** that impact the community beyond the school

Achievement

(Level 3) Represented school for ...

- **2 years** in local or external events

Participation

(Level 4) Participated in CCA

- **for 4 years with at least 75% attendance for each year**
- Demonstrate exemplary conduct and active contribution (*Demonstrate 'Very Strongly' in most behaviour traits across the 5 HEART values. (*Refer to "Translating Values to Behaviours" in Annex)*)



Highlights of Semester 1

January	February	March	April	May	June
START Right Programme CCA Fair Meet-The-Parents Sessions National School Games Opening	Sec 4/5 LNY Carnival for the elderly Tea with YHs Friendship Day / Total Defence Day MTFN events Student Leaders' Badging Ceremony	Sec 3 NRIC Registration Sec 3 MOE-OBS Sec 4/5 ApLM	PL110 Musical Montage Religious Emphasis Week S4/5 Oral Exams	Sec 2/3 Overseas Cultural Immersion Trip to S. Korea Student Leaders' Dedication Service Sec 4/5 MTL Intensive PIT-STOP Programme PL110 Family Day & Carnival	O Level MT Paper



Highlights of Semester 2

July	August	September	October	November
MT O level LC exam	O level Prelims	4N intensive lessons	O Level Exams	O Level Exams
National Oral Exams	National Day Celebrations	N Level Exams	Wrap Up Programme	Cambridge Dinner
School Prelims		Baccalaureate Service & Graduation Day		
Tea with Year Heads				



PAYA LEBAR METHODIST GIRLS' SCHOOL (SECONDARY)



Registration of National Registration Identity Card (NRIC) in School



Official (Closed) / Sensitive (Normal) - Do not circulate



Registration of National Registration Identity Card (NRIC) in School

The registration exercise will be conducted on **9 March (Monday)** in school during school hours to provide greater convenience to our students.

ICA will be sending **notification letters** to students through their parents **2 weeks before** the appointment date.



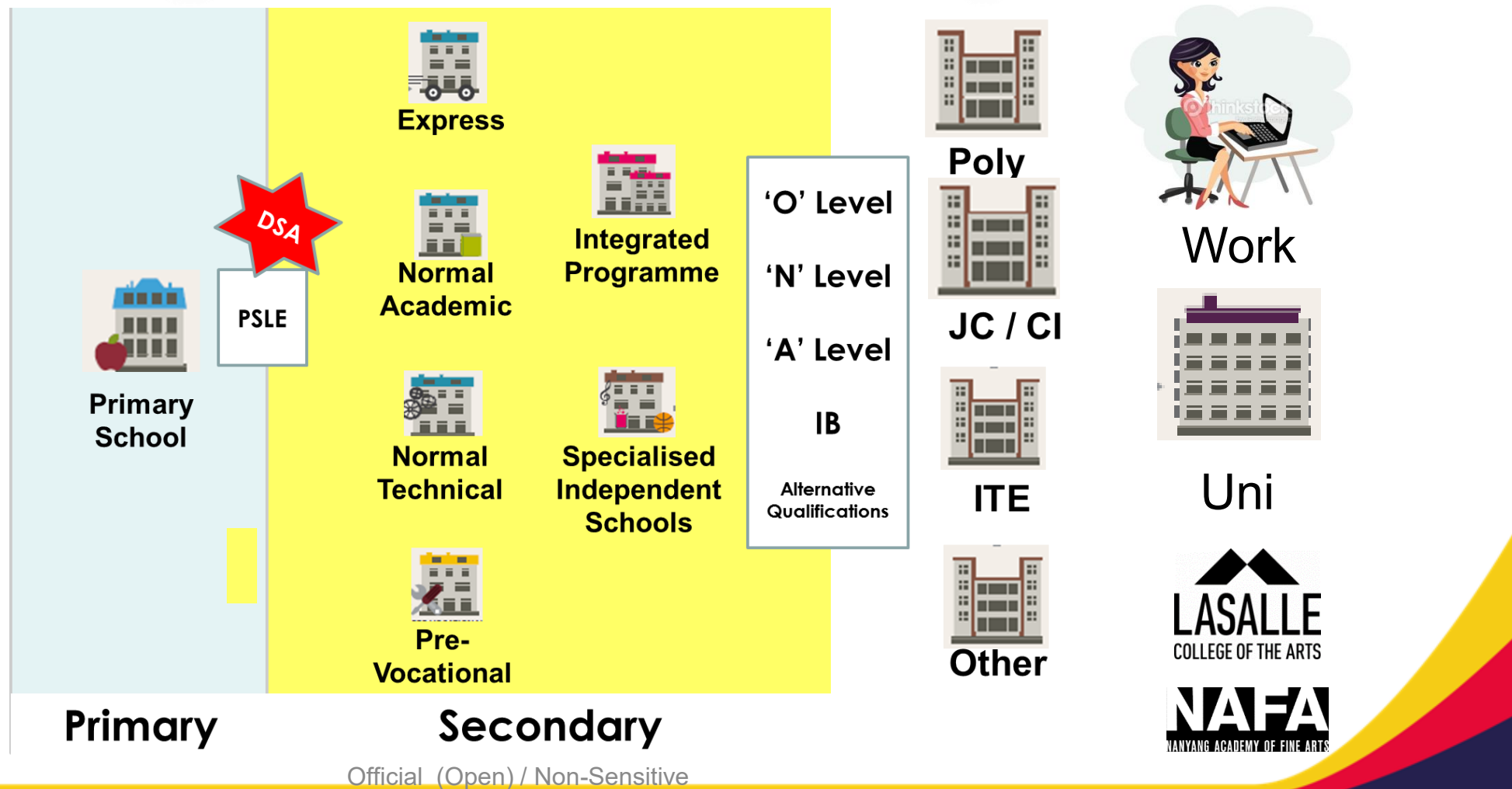
PAYA LEBAR METHODIST GIRLS' SCHOOL (SECONDARY)



The New Singapore Context – Full SBB

Start Planning for Post-Secondary Education

For Sec
4/5s, for
now...



For Sec 3s

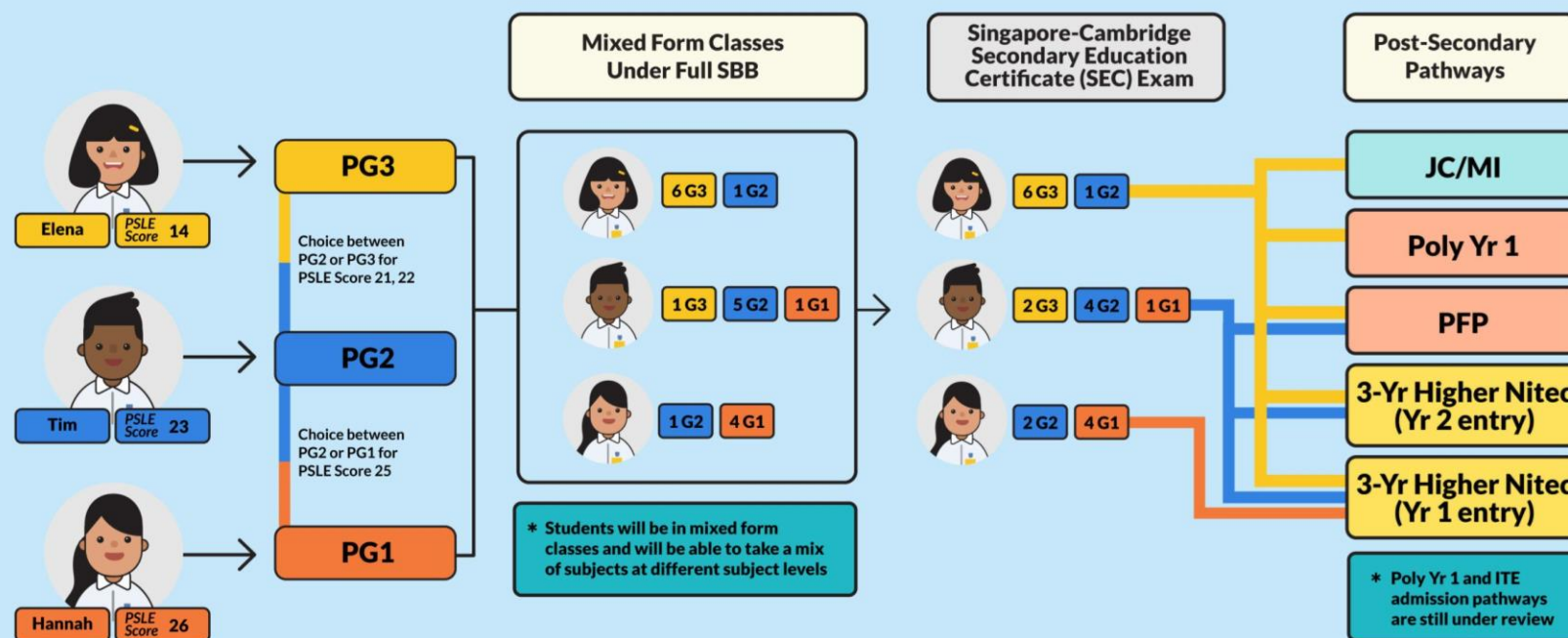
G3 subjects

G2 subjects

G1 subjects

Secondary School Experience and Post-Secondary Pathways Under Full SBB

From 2024 Sec 1 cohort onwards, Posting Groups will be used to facilitate the admission of students to secondary schools. Once students are posted to Sec 1, they will have a school experience that better caters to their different strengths, interests, and learning needs, no longer distinguished by academic streams. There will be greater flexibility for students to customise their learning. Students will have more options for their post-secondary pathways, while ensuring they have strong fundamentals, and can thrive in their chosen pathway.





Revised subject requirements for JC admission from 2028



L1R5 → **L1R4**
≤ 20 ≤ 16

Component	Subjects	Current L1R5	From 2028 L1R4
L1	English or higher mother tongue language	✓	✓
R1	Any 1 best-scoring subject from Humanities	✓	✓
R2	Any 1 best-scoring subject from Mathematics or Science	✓	✓
R3	Any 1 best-scoring subject from Humanities, Mathematics or Science	✓	✓
R4	Any 1 best-scoring subject	✓	✓
R5	Any 1 best-scoring subject	✓	—
Qualifying threshold for JC eligibility		20	16



PAYAL LEBAR METHODIST GIRLS' SCHOOL (SECONDARY)



Help your daughter develop Personal Agency Planning for Post-Secondary Education

<https://go.gov.sg/pljaecourses2025>

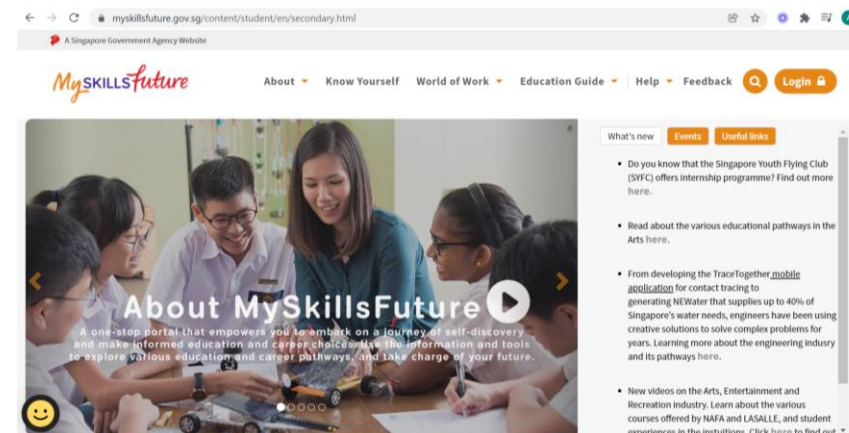
<https://www.myskillsfuture.gov.sg/content/student/en/secondary.html>

COURSES OFFERED IN 2025 JAE

Use **SchoolFinder** at
www.moe.gov.sg/schoolfinder
to explore junior colleges and
Millennia Institute.



Use **CourseFinder** at
www.moe.gov.sg/coursefinder
to explore courses in polytechnics
and ITE.





PAYA LEBAR METHODIST GIRLS' SCHOOL (SECONDARY)



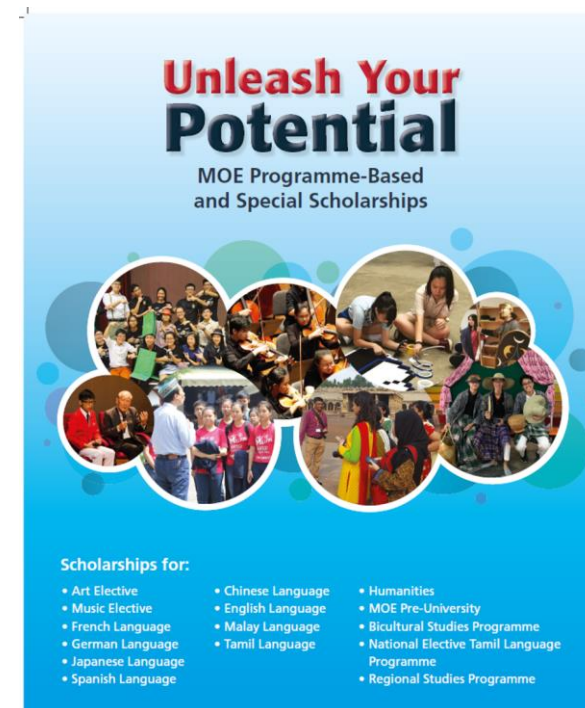
Post-Sec Scholarships

G3

- Humanities Scholarship
- Language Elective Scholarships
- Music Elective Scholarship
- Art Elective Scholarship (AES)
- Bicultural Studies Programme Scholarship
- Regional Studies Programme Scholarship
- Scholarships Offered by Polytechnics
- Scholarships Offered by Lasalle and NAFA

G2

- Nursing Sponsorship for NITEC in Nursing
- SingHealth Nursing Sponsorship (NITEC)
- Singapore Olympic Foundation-Peter Lim Sports Scholarship
- Industry Scholarships For ITE Courses
- PFP Bursary



<https://www.plmgss.moe.edu.sg/curriculum/cce/post-secondary-scholarships/>



Post-Sec Scholarships Application

Write-up and evidences required

- **JC DSA**
- **Poly/ITE EAE**

1. Candidate's Particulars
2. Academic Achievements
3. CCA Record
4. School's Assessment of Candidate's Character
5. Candidate's Personal Statement

Accompanying Documents

- GCE 'O' Level Certificate or Results Slip
- CCA Certificate for Secondary[#]
- Character Award Certificate (where applicable)[#]

Conduct, Moral integrity, Care and concern for others, Resilience, Ability to work in teams and Contribution to school/ community/ society



PAYA LEBAR METHODIST GIRLS' SCHOOL (SECONDARY)



Our Parents



PAYA LEBAR METHODIST GIRLS' SCHOOL (SECONDARY)



WHY ARE OUR PARENTS HERE TODAY?

School

- What does the school stand for?
- What is in store for my child?

Staff (People)

- Who are the people I will be working with?

Support

- How can I, my family and my child be better equipped for this new journey?



From Sec 2 to Sec 3...

No Change

- Adolescence (12-18 yrs)
- Need protective factors



Changes

- Physical, Social and Emotional Maturity
- Character Growth
- Leadership Growth
- Start thinking about future pathways
- World around them is changing

NEEDS



Sec 3 – A Significant Adjustment Year

- New TG-mates, teachers
- Heavier curriculum and assessment expectations
- Seeking more independence. Stronger interest in and greater influence by peers.
- Questions authority and societal standards
- More extensive learning opportunities
- Stepping up to take on leadership roles





PAYA LEBAR METHODIST GIRLS' SCHOOL (SECONDARY)



Our Sec 4/5 PL-Lites in 2026

Class FIS Project

Prefect/CCA Leader/Peer-Lite
Sports Leader

GCE N & O Level
Examinations

Extended Academic
Programme & Night Study

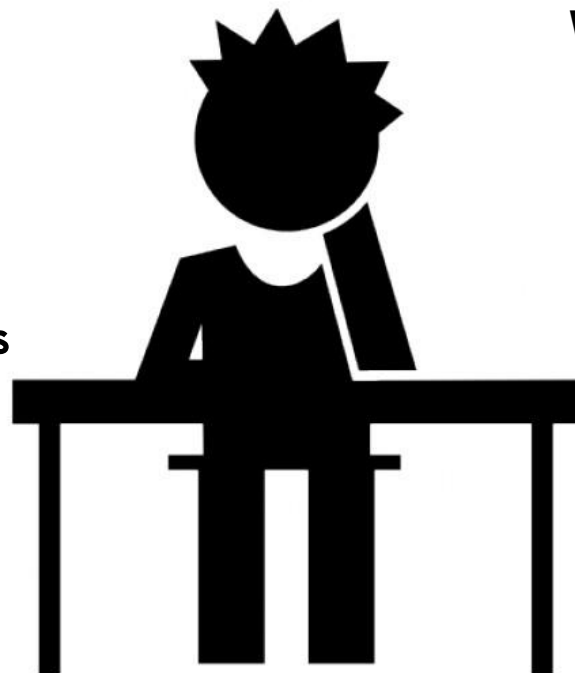
ECG and Motivation
Workshops

Sports Day, Founder's Day etc.

CCA Competitions/NSF/Trainings

Homework/ Tests/ Exams

Remedials, Consultations



In this season of high expectations...

Stabilise your daughter with Protective Factors

Protective factors contribute to an individual's capacity to cope with challenges in life.



Risk factors increase the likelihood of developing a mental illness. As risk factors accumulate, more protective factors are needed to compensate for them.



Positive Adjustment

1. Spend Quality Time (school & family)

- Be present
- Avoid talking about homework / tests / results over dinner
- Listen, ask and discuss, rather than tell
- Avoid making comparisons



Positive Adjustment

2. Help our PL-Lites Discover their Strengths

- Help them discover who they are
- Guide them in recognising their strengths, interests and areas for growth



Positive Adjustment

3. Build Resilience & Self-Efficacy

Self – Care

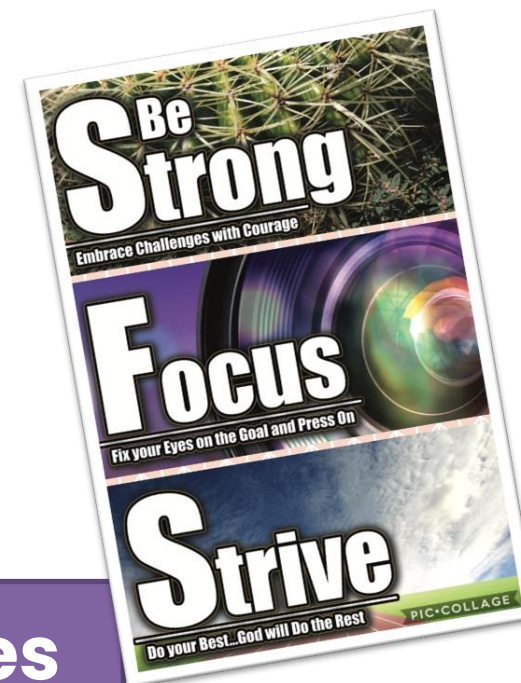
**Progress
NOT
Perfection**

**Space to
problem
solve**

Build a growth mindset

- Ability can be grown through effort
- Setbacks and mistakes are opportunities for learning and growth
- Take feedback positively, not defensively
- Be inspired, not threatened, by others' success

Effort x Right Strategies = Positive Outcomes



Positive Adjustment

4. Working Closely and Constructively with the School

- Reinforce school's expectations at home
- Share & discuss important information
- Teachers need time and space to do their job well, and encouragement too 😊
- Join the PSSSG and other Parent Group (e.g. Praying Parents on Mondays)





Positive Adjustment

4. Working Closely and Constructively with the School

Homework:

Appreciate parents' partnership in the following

- Ensure that the students do **revision**.
- **Do the homework at appropriate time**, and not leave it to the last minute or the night before (just before bedtime).
- There should not be distractions from the handphone.



PAYA LEBAR METHODIST GIRLS' SCHOOL (SECONDARY)

SUMMARY



How can our PL-Lites achieve their Goals?

ACADEMIC DEMANDS

- TAKE OWNERSHIP OF THEIR LEARNING
- SEEK CLARIFICATIONS WHEN IN DOUBT EARLY
- BE CONSISTENT – BE PRESENT & PARTICIPATIVE IN CLASS

HIGH EXPECTATIONS

- POSITIVE (BE OPEN TO NEW EXPERIENCES)
- GROWTH MINDSET
- BE RESILIENT

LESS TIME TO INDULGE

- TIME MANAGEMENT (PRIORITIES, BALANCE)
- MANAGING PEERS & RELATIONSHIPS



PAYA LEBAR METHODIST GIRLS' SCHOOL (SECONDARY)



Keep in touch with the school

Parents' Communications with School

<https://www.plmgss.moe.edu.sg/articles/guidelines-on-parents-communication-with-the-school>



Within school hours
(7.30 a.m. – 6 p.m.),
on working weekdays,
and during school terms



Teachers are not expected to provide their personal mobile numbers



Urgent messages to teachers may be directed to the school's General Office



Appointments for face-to-face meetings made at least 3 days in advance



Response
Time
3-7-21



Road Safety – Alighting Points

- Every morning more than 350 cars come into the School
- To ease traffic congestion, please use alighting points at:
 - Opposite Carpark @ HDB Bk 138 (beside Maplewood Park)
 - Carpark @ HDB Bk 134/135 (beside the School) (Upper Sec)
 - School Covered Carpark (Lower Sec)



PAYA LEBAR METHODIST GIRLS' SCHOOL (SECONDARY)



Bus driving strategy (6.45am - 7.30am)



Official (Open) / Non-Sensitive



PAYA LEBAR METHODIST GIRLS' SCHOOL (SECONDARY)



Thank You!