



PAYA LEBAR METHODIST GIRLS' SCHOOL (SECONDARY)

2025
Sec 3 Subject Options and Combinations
– students briefing
(Apr 2024)



Objectives

1. Context and background
2. 2025 Sec 3 class structure
3. Subject allocation procedure and criteria
4. (tentative) 2025 Sec 3 subject options and combinations



“Put to rest the **mistaken notion** that there is a single, dominant path to success that starts from a very young age.

The school system will become far more flexible than today, so that we can customise learning to the student, **to give them time to blossom at different points in their lives**, while anchoring the belief that we can grow and get better.”

- *Minister for Education, Ong Ye Kung
COS 2019*





Background

- **2020 - 2022** – Full-SBB S1 & S2, S3 students taking More Demanding Level for Humanities
- **2023** – Full-SBB for Sec 3 (banding based on Subject Combination)
- **2024** onwards – Full-SBB for all levels

What are your senior said about her learning?

Insight
The Sunday Times | Sunday, March 07, 2019
End of streaming in education

STREAMING: THE PAST ...AND THE FUTURE

Normal (Academic) student Low Jie Ying consistently scores As in Maths at Express level, but declined her school's offer to transfer to the Express stream. She welcomes subject-based banding as it will allow students to grow and be developed in the subjects they are strong in. ST PHOTO: GIN TAY



Subject-based banding gives N(A) student confidence boost

Jolene Ang

Being able to solve mathematical problems gives Normal (Academic) student Low Jie Ying a sense of satisfaction – and even more so when her Express school-mates approach her for help.

When she was in Secondary 1, the Paya Lebar Methodist Girls' School student was offered the chance to take mathematics and Chinese at the Express level, under subject-based banding, as she had done well in those subjects in the Primary School Leaving Examination. Now a Sec 3 student, Jie Ying, 15, tells Insight that she has been consistently scoring As in Maths exams at the Express level. She says: "Maths classes are easy. I enjoy solving problems and, sometimes, my Express classmates ask me for help. "They'll text me questions or ask me after school, and I won't hesitate to help." This has given her a huge confidence boost. "There are no real differences between Express and Normal stream students," she says. "We each have our own unique personalities, strengths and areas we are not so good at. For maths, I am on a par with the Express stream students and can do just as well as they can. "I've become more confident and mature in thinking, and I learnt how to manage my time better." But not everyone can be good at everything, she adds. English and literature are two of her weaker subjects. So when the school offered her a chance to transfer to the Express stream this year, she turned it down. She explains: "I like the pace of learning in N(A). The teacher will go through things slowly in class to let us understand better. In Express classes, we learn more things and at a faster pace so it's very difficult – but maths and Chinese are okay." She was heartened by the Education Ministry's announcement earlier this month that it will be removing the Normal and Express streams in secondary schools. In place of those streams will be full subject-based banding, which will include humanities subjects such as geography, literature and history, on top of the current offerings of English, mother tongue languages, maths and science. Students can choose subjects at a higher or lower level based on their strengths. Says Jie Ying: "The removal of Normal and Express streams will be beneficial. (Full subject-based banding) recognises the strength of every student, allowing the students to grow and be developed in the subjects they are strong in."

jolene21@sph.com.sg



PAYA LEBAR METHODIST GIRLS' SCHOOL (SECONDARY)

德 智 体 群 美

Morals, Intellect, Physical body, Team spirit, Aesthetics



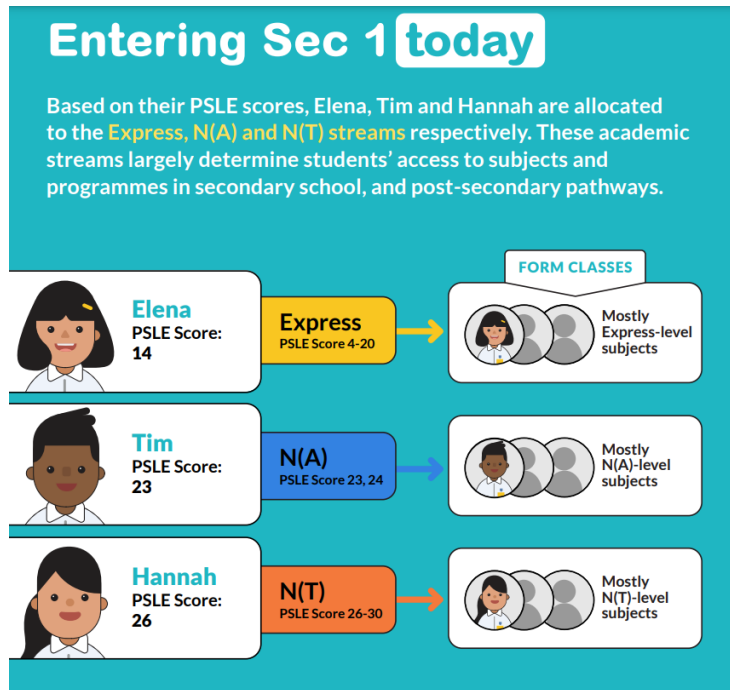
Holistic Education



2025 Sec 3 Form Class Structure

Full SBB

- Social-mixing
- Students can offer subjects at APPROPRIATE subject levels



2025 Upper Sec Form Class Structure

- Social mixing: similar to 2024 – retain current form classes

Class 2023/4	Class 2025/6
1.1, 2.1	3.1, 4.1
1.2, 2.2	3.2, 4.2
1.3, 2.3	3.3, 4.3
1.4, 2.4	3.4, 4.4
1.5, 2.5	3.5, 4.5
1.6, 2.6	3.6, 4.6
1.7, 2.7	3.7, 4.7
1.8, 2.8	3.8, 4.8

Key Considerations:

- Student familiarity with their classmates, needs and aspirations
- Staff needs, strengths, resource availability
- Structure for subject teaching group option formation and generation of timetable



How Subject Combinations are derived

Combinations are reviewed annually and modified based on

- Available Staff or Physical Resources
- **Requirements for Post-Sec courses**
- Observations and discussions on the strengths, aptitudes & aspirations of students
- **O & N Levels performance of previous batches**



Subject Combi Allocation Principles

Merit

- Overall Percentage at Sec 2 and Subject Eligibility Criteria

Choice

- Rank order – 1st Choice will be considered if the results meet the subject criteria

Vacancy

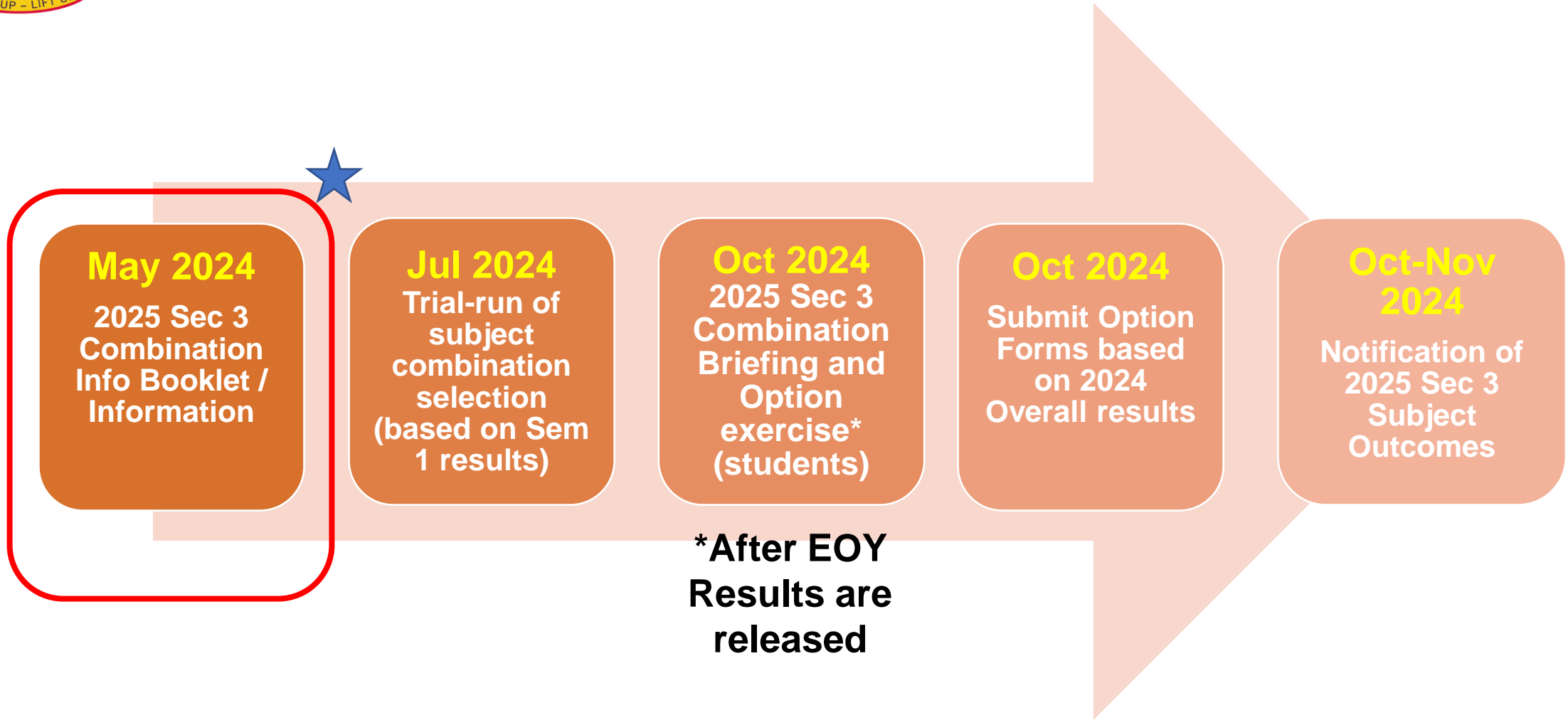
- Availability of places in a particular option combination

Subjects offered depends on:

- **Availability of teacher resource** and a subject will have a maximum 40 students teaching group size if too many students opt for it.
- **Take-up rate** – a subject will not be offered if the minimum 20 students take-up rate is not met.



Timeline @ a Glance





2025 Sec 3 Subject Combinations - Exp

	Option 1	Option 2	Option 3	
Languages	English Language Mother Tongue/ Higher MT	English Language Mother Tongue/ Higher MT	English Language Mother Tongue/ Higher MT	
Mathematics	Mathematics Additional Mathematics	Mathematics Additional Mathematics	Mathematics	
Sciences	Pure Chemistry Pure Biology	Pure Chemistry Pure Physics	a. Combined Science (Physics, Chemistry) or b. Combined Science (Biology, Chemistry)	
Combined Humanities (select one)	a. Social Studies & Elective Geography or b. Social Studies & Elective Literature* or c. Social Studies & Elective History			
Total subjects	<u>7 subjects</u>	<u>7 subjects</u>	Choose one from Grp. A and/or Grp. B	
8 th subject^ – for those eligible (max 40 studs per subject except for Pure Literature cap extends to option 3)	a. Pure Physics		<u>Grp. A</u>	<u>Grp. B</u>
	b. Pure Geography	a. Pure Geography	a. Additional Mathematics or	c. Principles Of Accounts
	c. Pure History	b. Pure History	b. Nutrition & Food Science	d. Pure Geography
	d. Pure Literature*	c. Pure Literature*		e. Pure Literature*
Total subjects	<u>8 subjects</u>	<u>8 subjects</u>	<u>6 or 7 subjects</u>	

* Subjected to availability of staff resource. At maximum the school can offer 1 Pure Literature and 1 Elective Literature class. If additional teacher resource is available, we may extend to 2 Elective Literature classes across the Express combinations.

^ Art/Music will be offered as the 8th subject. They will be conducted at the same time with the 8th subject-offerings under Options 1 and 2. The 8th subject will be offered at the end of the schooling day.



Subject Criteria

Points to note:

1. To be eligible for **Option 1 (Physics - 3rd Pure Science subject)**,
 - students should obtain a **minimum average of 70%** for English Language, Science and Mathematics.
 - student should obtain an overall average of **70% and above**.
 - subject to **minimum** of **20** students and **maximum** of **40** students class size per subject.
2. To be eligible for **Option 1 or 2 (2nd Pure Humanities subject)**,
 - students should obtain a **minimum average of 65%** for English Language, Science and Mathematics.
 - student should obtain an overall average of **65% and above**.
 - subjected to **minimum** of **20** students and **maximum** of **40** students class size per subject.
 - offering of the **Pure Literature** subject is subjected to the availability of manpower resources for the year.



Subject Criteria

Points to note:

3. Subjects Additional Mathematics, Pure Literature, Pure Geography are offered in **Option 3**.
 - to be eligible for these subjects, students should obtain a **minimum** of **65%** for Sec 2 Mathematics, Literature, Geography (Express).
 - subjected to **minimum** of **20** students and **maximum** of **40** students class size per subject.
 - offering of the **Pure Literature** subject is subjected to the availability of manpower resources for the year.
4. Art & Music are subjects that will be conducted in the afternoon, students should obtain the following.
 - to be eligible for Art, students should obtain a **minimum of 65%** for Sec 2 Art.
 - to be eligible for Art and Music, students should pass an audition and interview.
5. Students who are currently taking 3rd languages, they will be having a total of 8/9 subjects.



Scenario Learning 1

Student A

Attainment **Overall-73% and Ave EMS-79%**

Choice	Subject Option
1	Option 2 (with SS/Lit) – 7 subjects
2	Option 1 (with SS/Lit and Pure Physics) – 8 subjects
3	Option 1 (with SS/Lit and Pure Geog) – 8 subjects
4	Option 2 (with SS/Lit and Pure Geog) – 8 subjects
5	Option 3 (with Sci (P/C), SS/Lit, Add Math and POA) – 7 subjects
6	Option 3 (with Sci (P/C), SS/Lit, Add Math and Pure Geog) – 7 subjects

SS/Lit class filled

Student B

Attainment **Overall-70% and Ave EMS-71%**

Choice	Subject Option
1	Option 2 (with SS/Lit and Pure Hist) – 8 subjects
2	Option 1 (with SS/Lit and Pure Physics) – 8 subjects
3	Option 1 (with SS/Lit and Pure Hist) – 8 subjects
4	Option 2 (with SS/Lit and Pure Geog) – 8 subjects
5	Option 3 (with Sci (P/C), SS/Geog, Add Math and POA) – 7 subjects
6	Option 3 (with Sci (P/C), SS/Geog and Add Math) – 6 subjects

Learning: If you are keen to do an additional Pure subject, do not put all your choices to a single Humanities



Scenario Learning 2

SS/Lit class filled

Student C

Attainment **Overall-68% and Ave EMS-65%**

Choice	Subject Option
1	Option 2 (with SS/Lit) – 7 subjects
2	Option 1 (with SS/Lit and Pure Geog) – 8 subjects
3	Option 1 (with SS/Lit and Pure Hist) – 8 subjects
4	Option 2 (with SS/Lit and Pure Geog) – 8 subjects
5	Option 3 (with Sci (P/C), SS/Lit, Add Math and POA) – 7 subjects
6	Option 3 (with Sci (P/C), SS/Lit, Add Math and Pure Geog) – 7 subjects

SS/Lit class filled

Student D

Attainment **Overall-67% and Ave EMS-65%**

Choice	Subject Option
1	Option 2 (with SS/Lit and Pure Geog) – 8 subjects
2	Option 1 (with SS/Geog and Pure Hist) – 8 subjects
3	Option 1 (with SS/Lit and Pure Hist) – 8 subjects
4	Option 2 (with SS/Lit and Pure Geog) – 8 subjects
5	Option 3 (with Sci (P/C), SS/Geog, Add Math and POA) – 7 subjects
6	Option 3 (with Sci (P/C), SS/Geog and Add Math) – 6 subjects

Learning: Do have different choices of Humanities, to allow for a possible assignment of choice.



2025 Sec 3 Subject Combinations – N(A)

	Option 1	Option 2
Languages	English Language	English Language
	Mother Tongue	Mother Tongue
Mathematics	Mathematics	Mathematics
Humanities	Social Studies & Literature	Social Studies & Geography
Combined Science	a. (Physics, Chemistry) or b. (Biology, Chemistry)	
Other Elective subjects (select one)	a. (O-Level) Nutrition & Food Science or b. Principles of Accounts or c. Additional Mathematics	
Total subjects	<u>6 subjects</u>	<u>6 subjects</u>
7 th subject^ – for those eligible (max 40 studs per subject)	a. Pure Geography	
Total subjects	<u>7 subjects</u>	

^ Students who are interested in Art/Music (as the 7th subject), it will be conducted at the same time with the afternoon lessons for Options 1. The 7th subject will be offered at the end of the schooling day.



Subject Criteria

Points to note:

1. Students are eligible to take the more demanding subjects (i.e. O-Level subjects/G3),
 - subjected to a **minimum** of **20** students, manpower resources and timetable combination
 - more demanding subjects that are being offered at O-Level/G3 include English Language, Mother Tongue Language, Mathematics, Combined Science (Physics/Chemistry), Nutrition & Food Science, Art and Music.
2. To be eligible for G2 Pure Geography subject,
 - students should obtain a minimum of **65%** for Sec 2 Geography.
 - subjected to **minimum** of **20** students and **maximum** of **40** students class size per subject.
 - offering of the Pure Geography subject is subjected to the availability of manpower resources for the year.
3. To be eligible for N(A)-Level/G2 Additional Mathematics,
 - students should either obtain **60%** in Sec 2 Express/G3 Mathematics or
 - obtain a minimum **70%** in Sec 2 Normal (Academic)/G2 Mathematics.



2025 Sec 3 Subject Combinations – N(T)

Do refer to the S3 Subject Combinations Information Booklet for the details on subject content and assessment.

Subjects
English
Mathematics
Basic Mother Tongue
Computer Applications
Science NT
Elements of Business Studies
<u>6 Subjects</u>
Social Studies (Non-examinable)
NFTE Programme (Non-examinable)





Speakers

Recognition



Zoom-ing with professionals

Learning Journey



Subject classes

Points to note:

- There must be 20 or more students choosing this particular option before the school will consider opening the class.
- Student cannot be a school and private candidate at the same time. Therefore, student cannot sit for any subject at the national examinations as a private candidate.



Subject Option Online Portal (Trial)

- You will be receiving an email via your plmgss email account

Subject: Subject Combination and Option Exercise

Dear <Name>, <Class>

The following details are your information for the Secondary 3 2024 subject combination and option exercise:

URL link: <https://plmgs.schoolhub.sg/>
Username: <XXXXXX>
Password: <XXXX>

Please complete the trial option by XX XXX XX (8 am).

Thank you.

PL Admin



<https://plmgs.schoolhub.sg/>

plmgs.schoolhub.sg

Paya Lebar Methodist Girls' School (Secondary)

Home Contact

User login

Username *

Password *

• [Request new password](#)

CAPTCHA

This question is for testing whether or not you are a human visitor and to prevent automated spam submissions.

Math question *

3 + 3 =

Solve this simple math problem and enter the result.
E.g. for 1+3, enter 4.

Log in

Subject Option Exercise

Submitted by Jonathan on 15 September 2022 - 1:12pm

This is a Subject Option Exercise for Secondary Two students going on to Secondary Three in 2023. Students are advised to choose their subject combinations based on their interest, ability and aptitude. Placement is dependent upon academic merit and Preference subject to availability of places in the option.

Express: 4 Choices

Normal (A): 3 Choices

Schedule

Registration Period	21 Oct to 25 Oct (8am)
Check Allocation	31 Oct (8am)
Appeal Period	31 Oct to 04 Nov (8am)
Appeal Outcome	11 Nov (8am)

If you have problem with the login, please send eMail to jonathan@rjcat.com with the following info:

1. School:
2. Class:
3. Name:
4. Username:
5. Password:

Official (Open) / Non-Sensitive



What was our experience in taking up Subject-Based Banding?

12 MAR 2019



Students Low Jie Ying (left) and Nurul Shifa Abdul Latif (right) of Paya Lebar Methodist Girls' School (Secondary) were unsure about Subject-Based Banding (SBB) but decided to give it a try. They share their experiences.

Like 1.1K Tweet Share 1

Subject-Based Banding (SBB) was first introduced in 12 prototype secondary schools in 2014. It aims to provide greater flexibility in subjects offered at the lower secondary levels to cater to the different learning needs of students. SBB has given students from the Normal (Academic) course

I need to take A Maths !! I want to go to JC ..

ECG

Which Science subject should I read?

What are the available pathways for me?

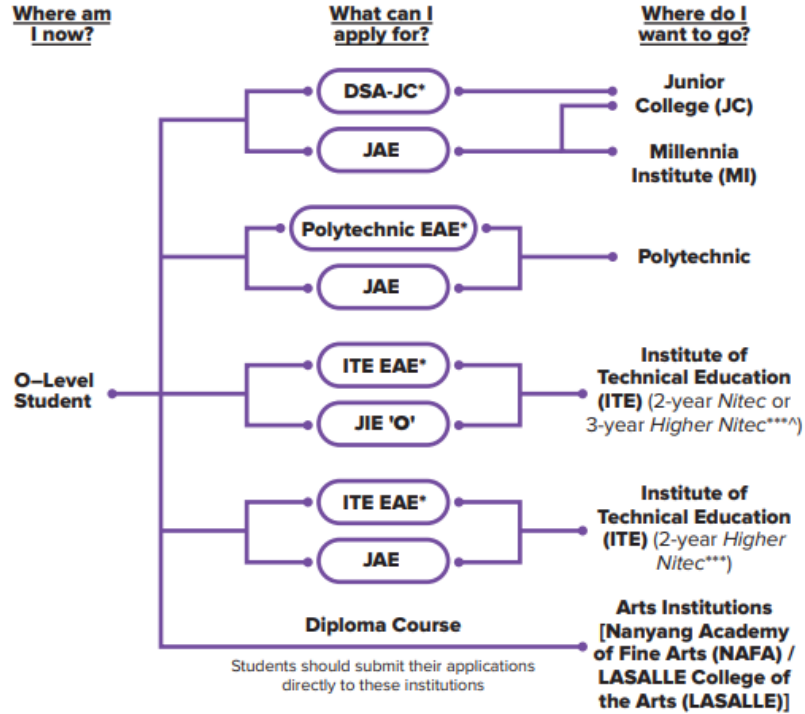
What skills should I have to get an internship with a company

Do I need triple sciences to study Medicine course in the future?

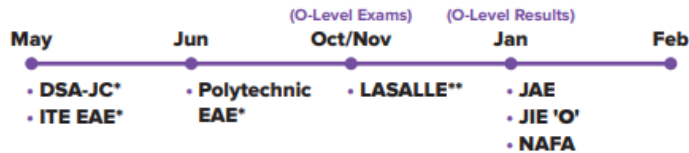


Start Planning for Post-Secondary Education

Admissions Exercises for O-Level Students

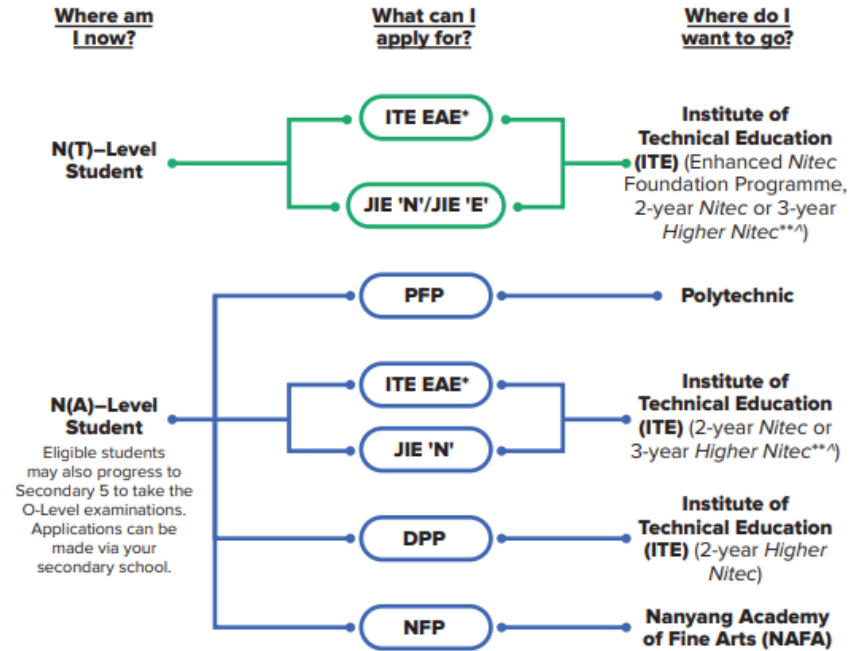


When can I apply?

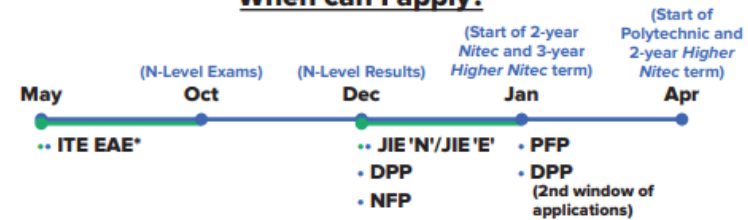


*Students can apply through these admissions exercises before their O-Level examinations
 **Application to LASALLE's diploma programmes starts from September.
 ***Certain Nitec and Higher Nitec courses are available in traineeship mode. For more information on applying to these courses, you can visit <https://www.ite.edu.sg/admissions/traineeship>
 ^There are eight 3-year Higher Nitec courses available for AY2022

Admissions Exercises for N-Level Students



When can I apply?



*Students can apply through these admissions exercises before their examinations.
 **Certain Nitec and Higher Nitec courses are available in traineeship mode. For more information on applying to these courses, you can visit <https://www.ite.edu.sg/admissions/traineeship>
 ^There are eight 3-year Higher Nitec courses available for AY2022



Must I take triple science to enter a science stream in a JC?

No you do not.

JCs do not offer triple sciences. In JC students are required to take 4 content subjects, of which one must be math and another contrasting subject (not science). Students should consider taking triple sciences only if they have **done well** in their science and **met the requirement** to qualify as triple sciences is a very demanding course. They should show a strong passion and aptitude in sciences.



Post Secondary Education

<https://www.ite.edu.sg/docs/default-source/admissions-docs/full-time/publications/prospectus/ite-2021-prospectus-full-time-education-and-traineeship.pdf>



Institute of Technical Education

Internet Address: www.ite.edu.sg

School of Applied & Health Sciences

Higher Nitec in Biotechnology
Higher Nitec in Chemical Technology
Higher Nitec in Paramedic & Emergency Care
Nitec in Applied Food Science
Nitec in Chemical Process Technology
Nitec in Community Care & Social Services
Nitec in Nursing
Nitec in Opticianry

Under the 'One ITE System, Three Colleges' Model, ITE's curriculum is delivered across three Colleges in Singapore. All Colleges promote multi-disciplinary and cross-level learning.

Each ITE College is equipped with high-tech learning spaces and digital learning approaches. Practical lessons are conducted in exciting, authentic learning environments that simulate actual work situations, from aircraft hangars, well-equipped training kitchens and restaurants to sound stages, AR/VR studios, retail and healthcare labs.



Key Documents

1. **ECG - JAE/JIE 2023 Booklet**

Link:<https://www.plmgss.moe.edu.sg/articles/admission-booklets/>

2. **Subject Combination** with criteria for subjects

3. Email with Login ID and password for <https://plmgs.schoolhub.sg/>

- To received by Term 3 week 2 and option portal release on the Friday

4. Individual result list (**Semester 1**)

- To be issued on Term 3 week 2 to students



Thank you

